

Apolipoprotein CI Rabbit mAb

Catalog No: #56566

Package Size: #56566-1 50ul #56566-2 100ul

Orders: order@signalwayantibody.com

Support: tech@signalwayantibody.com

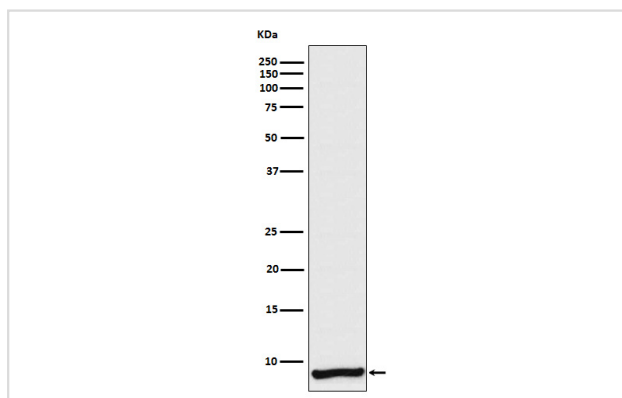
Description

| | |
|-----------------------|--|
| Product Name | Apolipoprotein CI Rabbit mAb |
| Host Species | Rabbit |
| Clonality | Monoclonal |
| Isotype | Rabbit IgG |
| Purification | Affinity-chromatography |
| Applications | WB IHC ICC/IF IP FC |
| Species Reactivity | Human |
| Specificity | Apolipoprotein CI Antibody detects endogenous levels of total Apolipoprotein CI |
| Immunogen Description | A synthesized peptide derived from human Apolipoprotein CI |
| Other Names | APO C1; Apo CI; APOC 1; ApoC I; APOC1; APOC1B; ApolipoproteinCI; |
| Accession No. | Uniprot:P02654 |
| Uniprot | P02654 |
| Calculated MW | 9kDa |
| Formulation | Rabbit IgG in phosphate buffered saline , pH 7.4, 150mM NaCl, 0.02% sodium azide and 50% glycerol. |
| Storage | Store at +4 Λ C short term. Store at -20 Λ C long term. Avoid freeze / thaw cycle. |

Application Details

WB:1:500~1:1000IHC:1:50~1:200ICC/IF:1:50~1:200IP:1:50FC:1:50

Images



Western blot analysis of Apolipoprotein CI expression in Human plasma lysate.

Product Description

Appears to modulate the interaction of APOE with beta-migrating VLDL and inhibit binding of beta-VLDL to the LDL receptor-related protein. Binds free fatty acids and reduces their intracellular esterification.

Note: This product is for in vitro research use only