

## CD239 Rabbit mAb

Catalog No: #56572

Package Size: #56572-1 50ul #56572-2 100ul

Orders: order@signalwayantibody.com

Support: tech@signalwayantibody.com

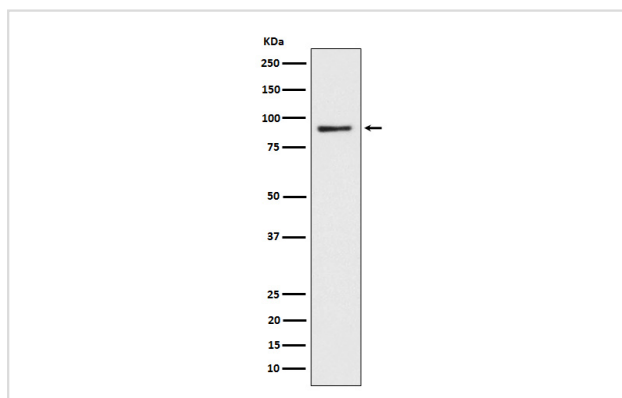
## Description

Product Name	CD239 Rabbit mAb
Host Species	Rabbit
Clonality	Monoclonal
Isotype	Rabbit IgG
Purification	Affinity-chromatography
Applications	WB IHC IP FC
Species Reactivity	Human Mouse Rat
Specificity	CD239 Antibody detects endogenous levels of total CD239
Immunogen Description	A synthesized peptide derived from human CD239
Other Names	Bcam; CD239; Lutheran; MSK19;
Accession No.	Uniprot:P50895
Uniprot	P50895
Calculated MW	85kDa
Formulation	Rabbit IgG in phosphate buffered saline , pH 7.4, 150mM NaCl, 0.02% sodium azide and 50% glycerol.
Storage	Store at +4Λ C short term. Store at -20Λ C long term. Avoid freeze / thaw cycle.

## Application Details

WB:1:500~1:2000IHC:1:50~1:200IP:1:50FC:1:50

## Images



Western blot analysis of CD239 expression in HepG2 cell lysate.

## Product Description

Laminin alpha-5 receptor. May mediate intracellular signaling.

---

Note: This product is for in vitro research use only