

## Timeless Rabbit mAb

Catalog No: #56574

Package Size: #56574-1 50ul #56574-2 100ul

Orders: order@signalwayantibody.com

Support: tech@signalwayantibody.com

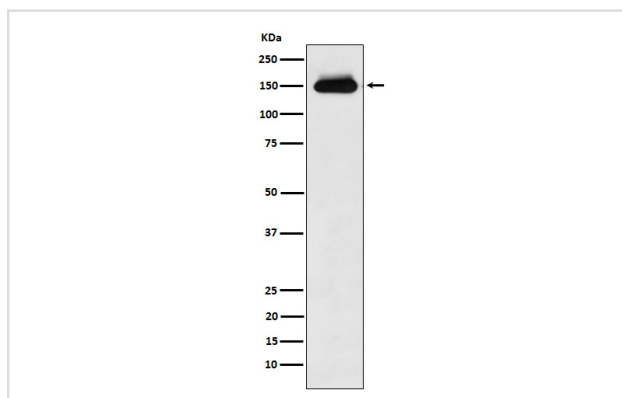
## Description

Product Name	Timeless Rabbit mAb
Host Species	Rabbit
Clonality	Monoclonal
Isotype	Rabbit IgG
Purification	Affinity-chromatography
Applications	WB IHC ICC/IF
Species Reactivity	Human
Specificity	Timeless Antibody detects endogenous levels of total Timeless
Immunogen Description	A synthesized peptide derived from human Timeless
Other Names	hTIM; TIM; TIM1; Timeless; timeless circadian clock 1; TIMELESS1;
Accession No.	Uniprot:Q9UNS1
Uniprot	Q9UNS1
Calculated MW	150kDa
Formulation	Rabbit IgG in phosphate buffered saline , pH 7.4, 150mM NaCl, 0.02% sodium azide and 50% glycerol.
Storage	Store at +4Λ C short term. Store at -20Λ C long term. Avoid freeze / thaw cycle.

## Application Details

WB:1:500~1:2000IHC:1:50~1:200ICC/IF:1:50~1:200

## Images



Western blot analysis of Timeless expression in HeLa cell lysate.

## Product Description

Required for normal progression of S-phase. Involved in the circadian rhythm autoregulatory loop. Negatively regulates CLOCK-NPAS2/BMAL1-induced transactivation of PER1 possibly via translocation of PER1 into the nucleus.

---

Note: This product is for in vitro research use only