

Desmoplakin Rabbit mAb

Catalog No: #56575

Package Size: #56575-1 50ul #56575-2 100ul

Orders: order@signalwayantibody.com

Support: tech@signalwayantibody.com

Description

Product Name	Desmoplakin Rabbit mAb
Host Species	Rabbit
Clonality	Monoclonal
Isotype	Rabbit IgG
Purification	Affinity-chromatography
Applications	WB ICC/IF FC
Species Reactivity	Human Rat
Specificity	Desmoplakin Antibody detects endogenous levels of total Desmoplakin
Immunogen Description	A synthesized peptide derived from human Desmoplakin
Other Names	Desmoplakin I; Desmoplakin II; DPI; DPII; DSP; KPPS2; PPKS2;
Accession No.	Uniprot:P15924
Uniprot	P15924
Calculated MW	270kDa
Formulation	Rabbit IgG in phosphate buffered saline , pH 7.4, 150mM NaCl, 0.02% sodium azide and 50% glycerol.
Storage	Store at +4Λ C short term. Store at -20Λ C long term. Avoid freeze / thaw cycle.

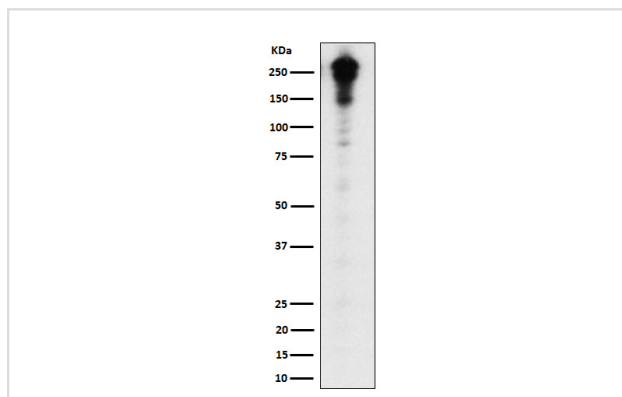
Application Details

WB: 1:500~1:2000

ICC/IF: 1:50~1:200

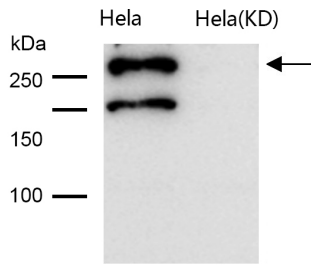
FC: 1:50

Images



Western blot analysis of Desmoplakin expression in A431 cell lysate.

All lanes use the Antibody at 1:1K dilution for 1 hour at room temperature.



Product Description

Major high molecular weight protein of desmosomes. Involved in the organization of the desmosomal cadherin-plakoglobin complexes into discrete plasma membrane domains and in the anchoring of intermediate filaments to the desmosomes.

Note: This product is for in vitro research use only