

PSMA2 Rabbit mAb

Catalog No: #56577

Package Size: #56577-1 50ul #56577-2 100ul

Orders: order@signalwayantibody.com

Support: tech@signalwayantibody.com

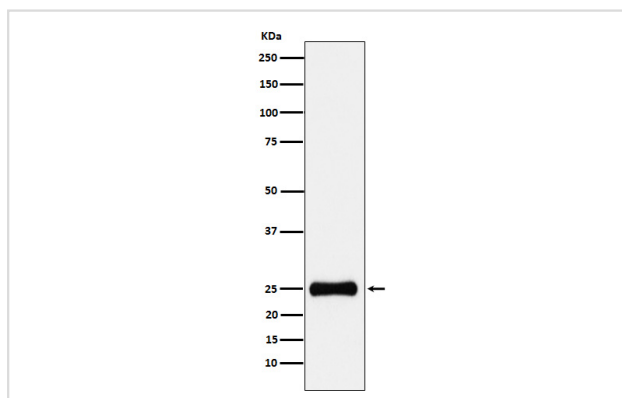
Description

Product Name	PSMA2 Rabbit mAb
Host Species	Rabbit
Clonality	Monoclonal
Isotype	Rabbit IgG
Purification	Affinity-chromatography
Applications	WB IHC ICC/IF FC
Species Reactivity	Human Mouse Rat
Specificity	PSMA2 Antibody detects endogenous levels of total PSMA2
Immunogen Description	A synthesized peptide derived from human PSMA2
Other Names	HC3; PMSA2; Proteasome component C3; PSC2; PSC3; psmA2;
Accession No.	Uniprot:P25787
Uniprot	P25787
Calculated MW	25kDa
Formulation	Rabbit IgG in phosphate buffered saline , pH 7.4, 150mM NaCl, 0.02% sodium azide and 50% glycerol.
Storage	Store at +4 Λ C short term. Store at -20 Λ C long term. Avoid freeze / thaw cycle.

Application Details

WB:1:500~1:2000IHC:1:50~1:200ICC/IF:1:50~1:200FC:1:50

Images



Western blot analysis of PSMA2 expression in HepG2 cell lysate.

Product Description

The proteasome is a multicatalytic proteinase complex which is characterized by its ability to cleave peptides with Arg, Phe, Tyr, Leu, and Glu adjacent to the leaving group at neutral or slightly basic pH.

Note: This product is for in vitro research use only