

WAPL Rabbit mAb

Catalog No: #56582

Package Size: #56582-1 50ul #56582-2 100ul

Orders: order@signalwayantibody.com

Support: tech@signalwayantibody.com

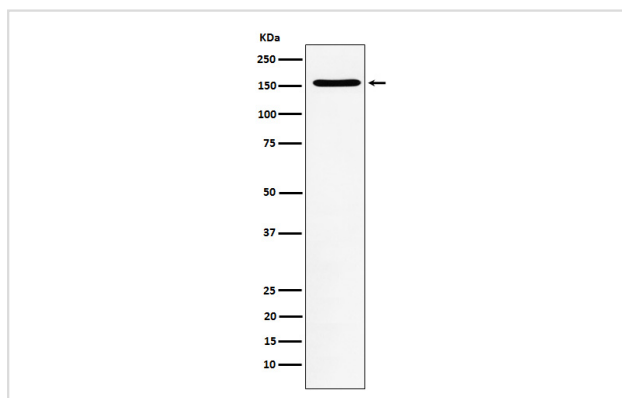
Description

Product Name	WAPL Rabbit mAb
Host Species	Rabbit
Clonality	Monoclonal
Isotype	Rabbit IgG
Purification	Affinity-chromatography
Applications	WB ICC/IF IP
Species Reactivity	Human
Specificity	WAPL Antibody detects endogenous levels of total WAPL
Immunogen Description	A synthesized peptide derived from human WAPL
Other Names	FOE; WAPAL; WAPL; Wings apart like homolog;
Accession No.	Uniprot:Q7Z5K2
Uniprot	Q7Z5K2
Calculated MW	160kDa
Formulation	Rabbit IgG in phosphate buffered saline , pH 7.4, 150mM NaCl, 0.02% sodium azide and 50% glycerol.
Storage	Store at +4 Λ C short term. Store at -20 Λ C long term. Avoid freeze / thaw cycle.

Application Details

WB: 1:500~1:2000 ICC/IF: 1:50~1:200 IP: 1:50

Images



Western blot analysis of WAPL expression in Jurkat cell lysate.

Product Description

Regulator of sister chromatid cohesion in mitosis which negatively regulates cohesin association with chromatin. Involved in both sister chromatid cohesion during interphase and sister-chromatid resolution during early stages of mitosis. Couples DNA replication to sister chromatid cohesion.

Note: This product is for in vitro research use only