

Aly Rabbit mAb

Catalog No: #56585

Package Size: #56585-1 50ul #56585-2 100ul

Orders: order@signalwayantibody.com

Support: tech@signalwayantibody.com

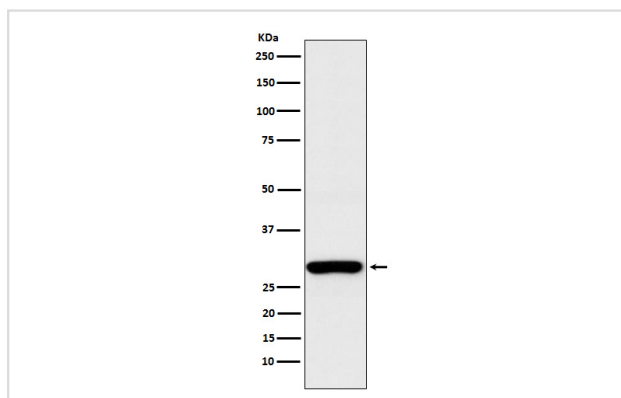
Description

Product Name	Aly Rabbit mAb
Host Species	Rabbit
Clonality	Monoclonal
Isotype	Rabbit IgG
Purification	Affinity-chromatography
Applications	WB IHC ICC/IF IP FC
Species Reactivity	Human Mouse Rat
Specificity	Aly Antibody detects endogenous levels of total Aly
Immunogen Description	A synthesized peptide derived from human Aly
Other Names	ALY; ALY/REF; BEF; REF; Tho4; thoc4;
Accession No.	Uniprot:Q86V81
Uniprot	Q86V81
Calculated MW	27kDa
Formulation	Rabbit IgG in phosphate buffered saline , pH 7.4, 150mM NaCl, 0.02% sodium azide and 50% glycerol.
Storage	Store at +4 Λ C short term. Store at -20 Λ C long term. Avoid freeze / thaw cycle.

Application Details

WB:1:500~1:2000IHC:1:50~1:200ICC/IF:1:50~1:200IP:1:40FC:1:100

Images



Western blot analysis of Aly expression in HEK293 cell lysate.

Product Description

Component of the THO subcomplex of the TREX complex. The TREX complex specifically associates with spliced mRNA and not with unspliced pre-mRNA. It is recruited to spliced mRNAs by a transcription-independent mechanism. Binds to mRNA upstream of the exon-junction complex (EJC) and is recruited in a splicing- and cap-dependent manner to a region near the 5' end of the mRNA where it functions in mRNA export.

Note: This product is for in vitro research use only