

TYRO3 Rabbit mAb

Catalog No: #56590

Package Size: #56590-1 50ul #56590-2 100ul

Orders: order@signalwayantibody.com

Support: tech@signalwayantibody.com

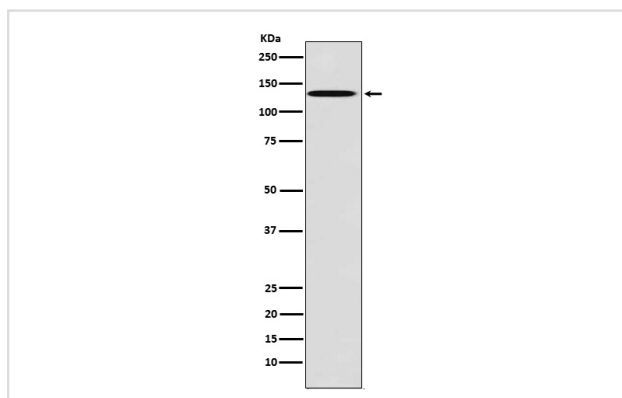
Description

Product Name	TYRO3 Rabbit mAb
Host Species	Rabbit
Clonality	Monoclonal
Isotype	Rabbit IgG
Purification	Affinity-chromatography
Applications	WB IHC ICC/IF IP
Species Reactivity	Human Mouse
Specificity	TYRO3 Antibody detects endogenous levels of total TYRO3
Immunogen Description	A synthesized peptide derived from human TYRO3
Other Names	Br1; BYK; DTK; Etk-2; Rek; RSE; SKY; Tif; tyro3;
Accession No.	Uniprot:Q06418
Uniprot	Q06418
Calculated MW	120kDa
Formulation	Rabbit IgG in phosphate buffered saline , pH 7.4, 150mM NaCl, 0.02% sodium azide and 50% glycerol.
Storage	Store at +4 Λ C short term. Store at -20 Λ C long term. Avoid freeze / thaw cycle.

Application Details

WB:1:500~1:2000IHC:1:50~1:200ICC/IF:1:100~1:500IP:1:50

Images



Western blot analysis of TYRO3 expression in MCF7 cell lysate.

Product Description

May be involved in cell adhesion processes, particularly in the central nervous system. In case of filovirus infection, seems to function as a cell entry factor.

Note: This product is for in vitro research use only