

KLF10 Rabbit mAb

Catalog No: #56592

Package Size: #56592-1 50ul #56592-2 100ul

Orders: order@signalwayantibody.com

Support: tech@signalwayantibody.com

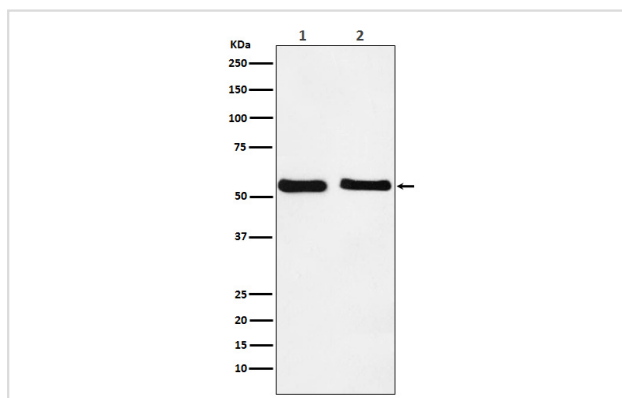
Description

Product Name	KLF10 Rabbit mAb
Host Species	Rabbit
Clonality	Monoclonal
Isotype	Rabbit IgG
Purification	Affinity-chromatography
Applications	WB
Species Reactivity	Human Mouse Rat
Specificity	KLF10 Antibody detects endogenous levels of total KLF10
Immunogen Description	A synthesized peptide derived from human KLF10
Other Names	EGR alpha; EGRA; Egral; EGRalpha; Gdnfif; KLF10; mGIF; TIEG; TIEG1;
Accession No.	Uniprot:Q13118
Uniprot	Q13118
Calculated MW	53kDa
Formulation	Rabbit IgG in phosphate buffered saline , pH 7.4, 150mM NaCl, 0.02% sodium azide and 50% glycerol.
Storage	Store at +4 Λ C short term. Store at -20 Λ C long term. Avoid freeze / thaw cycle.

Application Details

WB: 1:500~1:2000

Images



Western blot analysis of KLF10 expression in (1) HepG2 cell lysate; (2) NIH/3T3 cell lysate.

Product Description

Transcriptional repressor which binds to the consensus sequence 5'-GGTGTG-3'. Plays a role in the regulation of the circadian clock; binds to the GC box sequence in the promoter of the core clock component ARTNL/BMAL1 and represses its transcriptional activity.

Note: This product is for in vitro research use only