

RING1 Rabbit mAb

Catalog No: #56593

Package Size: #56593-1 50ul #56593-2 100ul

Orders: order@signalwayantibody.comSupport: tech@signalwayantibody.com

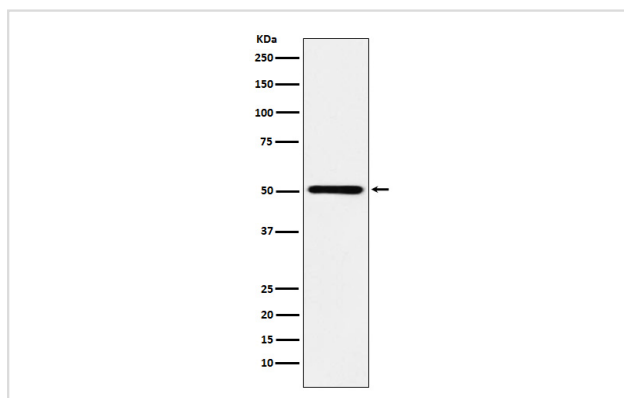
Description

Product Name	RING1 Rabbit mAb
Host Species	Rabbit
Clonality	Monoclonal
Isotype	Rabbit IgG
Purification	Affinity-chromatography
Applications	WB IHC ICC/IF
Species Reactivity	Human
Specificity	RING1 Antibody detects endogenous levels of total RING1
Immunogen Description	A synthesized peptide derived from human RING1
Other Names	Ring1A; Ring1; RING1A; Rnf1;
Accession No.	Uniprot:Q06587
Uniprot	Q06587
Calculated MW	50kDa
Formulation	Rabbit IgG in phosphate buffered saline , pH 7.4, 150mM NaCl, 0.02% sodium azide and 50% glycerol.
Storage	Store at +4 Λ C short term. Store at -20 Λ C long term. Avoid freeze / thaw cycle.

Application Details

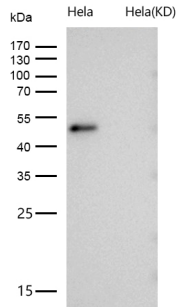
WB: 1:500~1:2000 IHC: 1:50~1:200 ICC/IF: 1:50~1:200

Images



Western blot analysis of RING1 expression in Ramos cell lysate.

All lanes use the Antibody at 1:1K dilution for 1 hour at room temperature.



Product Description

Constitutes one of the E3 ubiquitin-protein ligases that mediate monoubiquitination of 'Lys-119' of histone H2A, thereby playing a central role in histone code and gene regulation. H2A 'Lys-119' ubiquitination gives a specific tag for epigenetic transcriptional repression and participates in X chromosome inactivation of female mammals.

Note: This product is for in vitro research use only