

## COPA Rabbit mAb

Catalog No: #56599

Package Size: #56599-1 50ul #56599-2 100ul

Orders: order@signalwayantibody.com

Support: tech@signalwayantibody.com

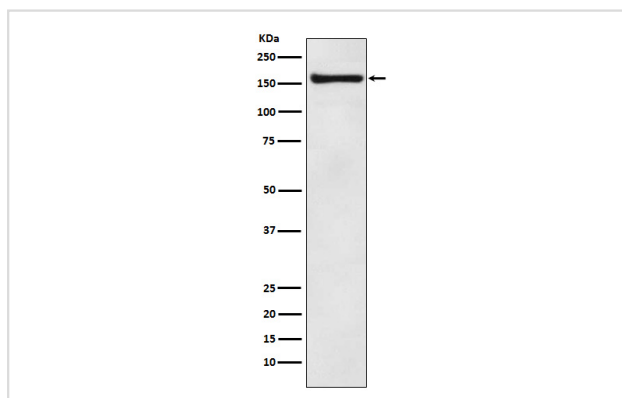
## Description

|                       |                                                                                                    |
|-----------------------|----------------------------------------------------------------------------------------------------|
| Product Name          | COPA Rabbit mAb                                                                                    |
| Host Species          | Rabbit                                                                                             |
| Clonality             | Monoclonal                                                                                         |
| Isotype               | Rabbit IgG                                                                                         |
| Purification          | Affinity-chromatography                                                                            |
| Applications          | WB IHC                                                                                             |
| Species Reactivity    | Human Mouse Rat                                                                                    |
| Specificity           | COPA Antibody detects endogenous levels of total COPA                                              |
| Immunogen Description | A synthesized peptide derived from human COPA                                                      |
| Other Names           | Alpha COP; Alpha COPI; AlphaCOP; COP A; copA; HEP COP; Proxenin; Xenin;                            |
| Accession No.         | Uniprot:P53621                                                                                     |
| Uniprot               | P53621                                                                                             |
| Calculated MW         | 138kDa                                                                                             |
| Formulation           | Rabbit IgG in phosphate buffered saline , pH 7.4, 150mM NaCl, 0.02% sodium azide and 50% glycerol. |
| Storage               | Store at +4 $\Lambda$ C short term. Store at -20 $\Lambda$ C long term. Avoid freeze / thaw cycle. |

## Application Details

WB:1:1000~1:5000IHC:1:50~1:200

## Images



Western blot analysis of COPA expression in MCF7 cell lysate.

## Product Description

The coatamer is a cytosolic protein complex that binds to dilysine motifs and reversibly associates with Golgi non-clathrin-coated vesicles, which further mediate biosynthetic protein transport from the ER, via the Golgi up to the trans Golgi network.

---

Note: This product is for in vitro research use only