

## ROR beta Rabbit mAb

Catalog No: #56601

Package Size: #56601-1 50ul #56601-2 100ul

Orders: order@signalwayantibody.com

Support: tech@signalwayantibody.com

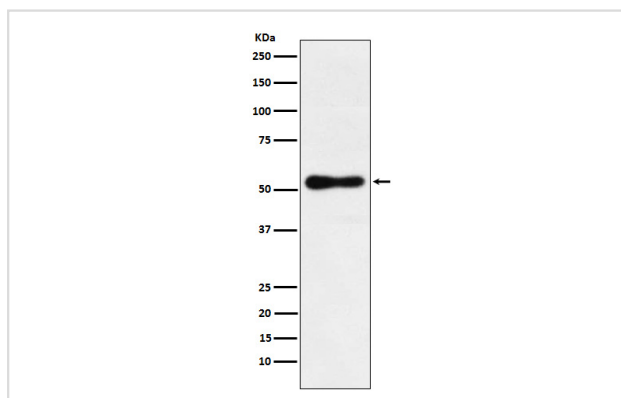
## Description

Product Name	ROR beta Rabbit mAb
Host Species	Rabbit
Clonality	Monoclonal
Isotype	Rabbit IgG
Purification	Affinity-chromatography
Applications	WB
Species Reactivity	Human Mouse
Specificity	ROR beta Antibody detects endogenous levels of total ROR beta
Immunogen Description	A synthesized peptide derived from human ROR beta
Other Names	NR1F2; ROR BETA; Rorb; RZR BETA; RZRB;
Accession No.	Uniprot:Q92753
Uniprot	Q92753
Calculated MW	53kDa
Formulation	Rabbit IgG in phosphate buffered saline , pH 7.4, 150mM NaCl, 0.02% sodium azide and 50% glycerol.
Storage	Store at +4Λ C short term. Store at -20Λ C long term. Avoid freeze / thaw cycle.

## Application Details

WB: 1:500~1:2000

## Images



Western blot analysis of ROR beta expression in HepG2 cell lysate.

## Product Description

Orphan nuclear receptor required for normal postnatal development of rod and cone photoreceptor cells. Regulates transcription of OPN1SW in cone photoreceptor cells by binding the sequence 5'-AGGTCA-3' in the OPN1SW promoter.

---

Note: This product is for in vitro research use only