

Mov10 Rabbit mAb

Catalog No: #56602

Package Size: #56602-1 50ul #56602-2 100ul

Orders: order@signalwayantibody.com

Support: tech@signalwayantibody.com

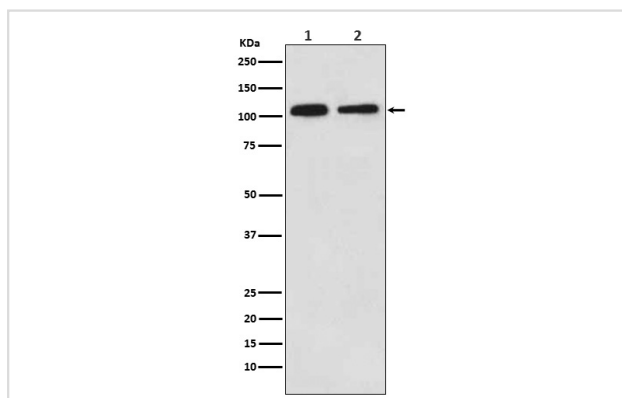
Description

Product Name	Mov10 Rabbit mAb
Host Species	Rabbit
Clonality	Monoclonal
Isotype	Rabbit IgG
Purification	Affinity-chromatography
Applications	WB IHC
Species Reactivity	Human Mouse Rat
Specificity	Mov10 Antibody detects endogenous levels of total Mov10
Immunogen Description	A synthesized peptide derived from human Mov10
Other Names	gb110; MOV 10;
Accession No.	Uniprot:Q9HCE1
Uniprot	Q9HCE1
Calculated MW	114kDa
Formulation	Rabbit IgG in phosphate buffered saline , pH 7.4, 150mM NaCl, 0.02% sodium azide and 50% glycerol.
Storage	Store at +4Λ C short term. Store at -20Λ C long term. Avoid freeze / thaw cycle.

Application Details

WB:1:500~1:2000IHC:1:50~1:200

Images



Western blot analysis of Mov10 expression in (1) 293 cell lysate; (2) NIH/3T3 cell lysate.

Product Description

MOV10 may be an helicase with an important function in development and/or control of cell proliferation. RNA silencing processes are guided by small RNAs known as siRNAs and microRNAs (miRNAs). They reside in ribonucleoprotein complexes, which guide the cleavage of complementary mRNAs or affect stability and translation of partial complementary mRNAs.

Note: This product is for in vitro research use only