

## Casein Rabbit mAb

Catalog No: #56603

Package Size: #56603-1 50ul #56603-2 100ul

Orders: order@signalwayantibody.com

Support: tech@signalwayantibody.com

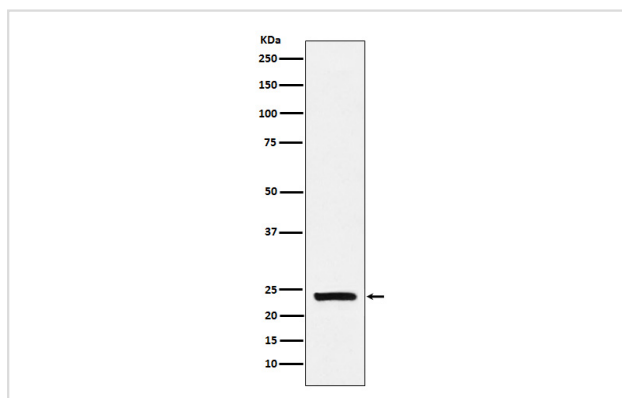
## Description

Product Name	Casein Rabbit mAb
Host Species	Rabbit
Clonality	Monoclonal
Isotype	Rabbit IgG
Purification	Affinity-chromatography
Applications	WB IP
Species Reactivity	Human
Specificity	Casein Antibody detects endogenous levels of total Casein
Immunogen Description	A synthesized peptide derived from human Casein
Other Names	Casein;
Accession No.	Uniprot:P47710
Uniprot	P47710
Calculated MW	22kDa
Formulation	Rabbit IgG in phosphate buffered saline , pH 7.4, 150mM NaCl, 0.02% sodium azide and 50% glycerol.
Storage	Store at +4Λ C short term. Store at -20Λ C long term. Avoid freeze / thaw cycle.

## Application Details

WB:1:1000~1:5000IP:1:50

## Images



Western blot analysis of Casein expression in Human milk lysate.

## Product Description

Important role in the capacity of milk to transport calcium phosphate.

---

Note: This product is for in vitro research use only