

## Scramblase 1 Rabbit mAb

Catalog No: #56605

Package Size: #56605-1 50ul #56605-2 100ul

Orders: order@signalwayantibody.com

Support: tech@signalwayantibody.com

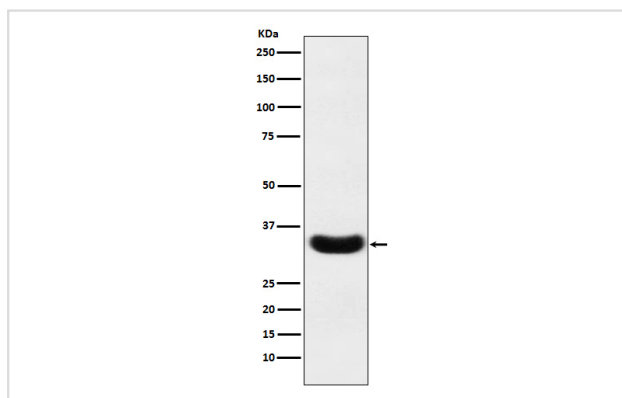
## Description

Product Name	Scramblase 1 Rabbit mAb
Host Species	Rabbit
Clonality	Monoclonal
Isotype	Rabbit IgG
Purification	Affinity-chromatography
Applications	WB ICC/IF IP FC
Species Reactivity	Human
Specificity	Scramblase 1 Antibody detects endogenous levels of total Scramblase 1
Immunogen Description	A synthesized peptide derived from human Scramblase 1
Other Names	MmTRA1a; MmTRA1b; Nor1; PLSCR 1; Scramblase1; Tra1; Tra1a; Tra1b; Tras1; Tras2;
Accession No.	Uniprot:O15162
Uniprot	O15162
Calculated MW	35kDa
Formulation	Rabbit IgG in phosphate buffered saline , pH 7.4, 150mM NaCl, 0.02% sodium azide and 50% glycerol.
Storage	Store at +4 $\Lambda$ C short term. Store at -20 $\Lambda$ C long term. Avoid freeze / thaw cycle.

## Application Details

WB:1:500~1:2000IC/IF:1:50~1:200IP:1:50FC:1:50

## Images



Western blot analysis of Scramblase 1 expression in A431 cell lysate.

## Product Description

May mediate accelerated ATP-independent bidirectional transbilayer migration of phospholipids upon binding calcium ions that results in a loss of phospholipid asymmetry in the plasma membrane. May play a central role in the initiation of fibrin clot formation, in the activation of mast cells and in the recognition of apoptotic and injured cells by the reticuloendothelial system.

---

Note: This product is for in vitro research use only