

Calpain S1 Rabbit mAb

Catalog No: #56606

Package Size: #56606-1 50ul #56606-2 100ul

Orders: order@signalwayantibody.com

Support: tech@signalwayantibody.com

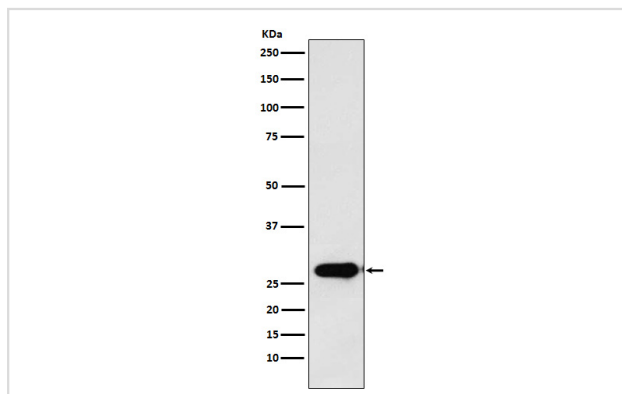
Description

Product Name	Calpain S1 Rabbit mAb
Host Species	Rabbit
Clonality	Monoclonal
Isotype	Rabbit IgG
Purification	Affinity-chromatography
Applications	WB IHC ICC/IF FC
Species Reactivity	Human Mouse Rat
Specificity	Calpain S1 Antibody detects endogenous levels of total Calpain S1
Immunogen Description	A synthesized peptide derived from human Calpain S1
Other Names	Calpain4; CalpainS1; CANP; CANPS; CAPN 4; CAPN S1; CAPN4; CAPNS 1; CAPNS; Capns1; CDPS; CSS1;
Accession No.	Uniprot:P04632
Uniprot	P04632
Calculated MW	28kDa
Formulation	Rabbit IgG in phosphate buffered saline , pH 7.4, 150mM NaCl, 0.02% sodium azide and 50% glycerol.
Storage	Store at +4 Λ C short term. Store at -20 Λ C long term. Avoid freeze / thaw cycle.

Application Details

WB:1:500~1:2000IHC:1:50~1:200ICC/IF:1:50~1:200FC:1:50

Images



Western blot analysis of Calpain S1 expression in T47D cell lysate.

Product Description

Regulatory subunit of the calcium-regulated non-lysosomal thiol-protease which catalyzes limited proteolysis of substrates involved in cytoskeletal remodeling and signal transduction.

Note: This product is for in vitro research use only