

CBX2 Rabbit mAb

Catalog No: #56608

Package Size: #56608-1 50ul #56608-2 100ul

Orders: order@signalwayantibody.com

Support: tech@signalwayantibody.com

Description

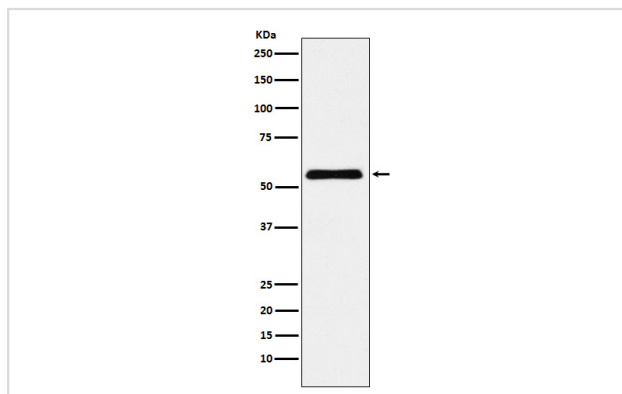
Product Name	CBX2 Rabbit mAb
Host Species	Rabbit
Clonality	Monoclonal
Isotype	Rabbit IgG
Purification	Affinity-chromatography
Applications	WB FC
Species Reactivity	Human Mouse Rat
Specificity	CBX2 Antibody detects endogenous levels of total CBX2
Immunogen Description	A synthesized peptide derived from human CBX2
Other Names	CBX2; CDCA6; M33 polycomb like; MOD2; Modifier3; Polycomb; SRXY5;
Accession No.	Uniprot:Q14781
Uniprot	Q14781
Calculated MW	56kDa
Formulation	Rabbit IgG in phosphate buffered saline , pH 7.4, 150mM NaCl, 0.02% sodium azide and 50% glycerol.
Storage	Store at +4Λ C short term. Store at -20Λ C long term. Avoid freeze / thaw cycle.

Application Details

WB:1:1000~1:5000

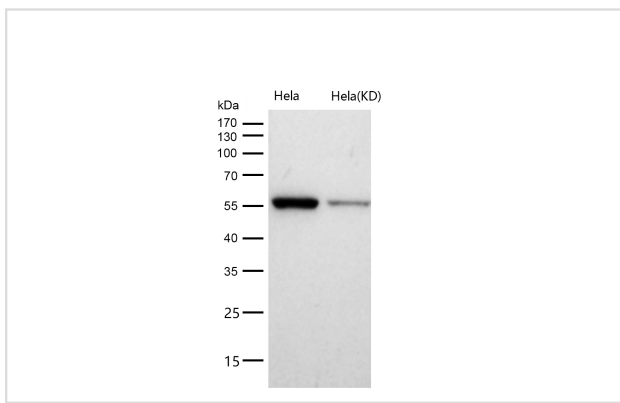
FC:1:150

Images



Western blot analysis of CBX2 expression in HeLa cell lysate.

All lanes use the Antibody at 1:2K dilution for 1 hour at room temperature.



Product Description

Component of the Polycomb group (PcG) multiprotein PRC1 complex, a complex required to maintain the transcriptionally repressive state of many genes, including Hox genes, throughout development.

Note: This product is for in vitro research use only