

## SLC22A1 Rabbit mAb

Catalog No: #56609

Package Size: #56609-1 50ul #56609-2 100ul

Orders: order@signalwayantibody.com

Support: tech@signalwayantibody.com

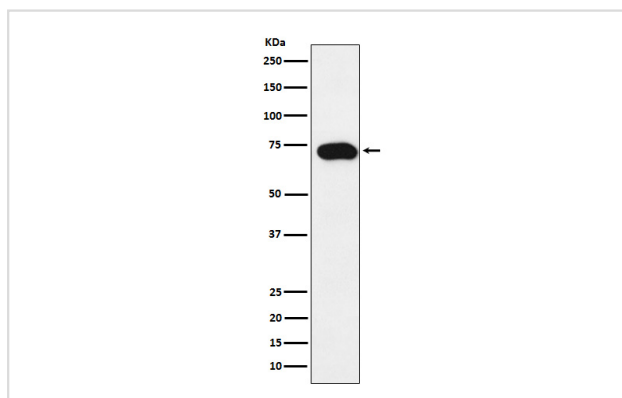
## Description

Product Name	SLC22A1 Rabbit mAb
Host Species	Rabbit
Clonality	Monoclonal
Isotype	Rabbit IgG
Purification	Affinity-chromatography
Applications	WB FC
Species Reactivity	Human
Specificity	SLC22A1 Antibody detects endogenous levels of total SLC22A1
Immunogen Description	A synthesized peptide derived from human SLC22A1
Other Names	hOCT1; OCT1; Slc22a1;
Accession No.	Uniprot:O15245
Uniprot	O15245
Calculated MW	72kDa
Formulation	Rabbit IgG in phosphate buffered saline , pH 7.4, 150mM NaCl, 0.02% sodium azide and 50% glycerol.
Storage	Store at +4Λ C short term. Store at -20Λ C long term. Avoid freeze / thaw cycle.

## Application Details

WB:1:500~1:2000FC:1:30

## Images



Western blot analysis of SLC22A1 expression in SW480 cell lysate.

## Product Description

Translocates a broad array of organic cations with various structures and molecular weights including the model compounds 1-methyl-4-phenylpyridinium (MPP), tetraethylammonium (TEA), N-1-methylnicotinamide (NMN), 4-(4-(dimethylamino)styryl)-N-methylpyridinium (ASP), the endogenous compounds choline, guanidine, histamine, epinephrine, adrenaline, noradrenaline and dopamine, and the drugs quinine, and metformin.

---

Note: This product is for in vitro research use only