

PHAPI2 / APRIL Rabbit mAb

Catalog No: #56610

Package Size: #56610-1 50ul #56610-2 100ul

Orders: order@signalwayantibody.com

Support: tech@signalwayantibody.com

Description

Product Name	PHAPI2 / APRIL Rabbit mAb
Host Species	Rabbit
Clonality	Monoclonal
Isotype	Rabbit IgG
Purification	Affinity-chromatography
Applications	WB IHC ICC/IF FC
Species Reactivity	Human Mouse Rat
Specificity	PHAPI2 / APRIL Antibody detects endogenous levels of total PHAPI2 / APRIL
Immunogen Description	A synthesized peptide derived from human PHAPI2 / APRIL
Other Names	ANP32B; PAL31; PHAPI2; PHAPI2a; Ssp29;
Accession No.	Uniprot:Q92688
Uniprot	Q92688
Calculated MW	29kDa
Formulation	Rabbit IgG in phosphate buffered saline , pH 7.4, 150mM NaCl, 0.02% sodium azide and 50% glycerol.
Storage	Store at +4Λ C short term. Store at -20Λ C long term. Avoid freeze / thaw cycle.

Application Details

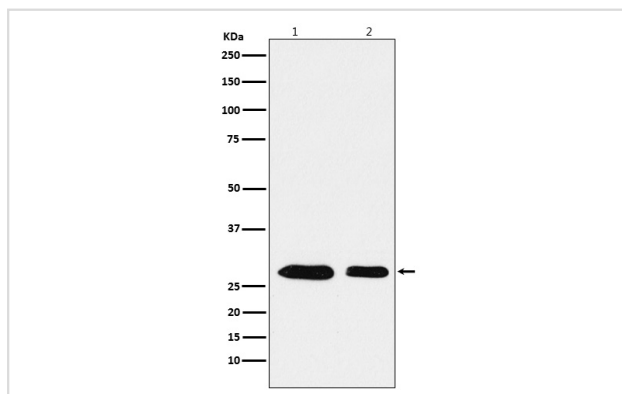
WB: 1:500~1:1000

IHC: 1:50~1:200

ICC/IF: 1:50~1:200

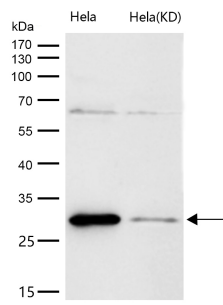
FC: 1:100

Images



Western blot analysis of PHAPI2 / APRIL expression in (1) Jurkat cell lysate; (2) RAW264.7 cell lysate.

All lanes use the Antibody at 1:500 dilution for 1 hour at room temperature.



Product Description

Multifunctional protein working as a cell cycle progression factor as well as a cell survival factor. Required for the progression from the G1 to the S phase.

Note: This product is for in vitro research use only