

## TCF21 Rabbit mAb

Catalog No: #56612

Package Size: #56612-1 50ul #56612-2 100ul

Orders: order@signalwayantibody.com

Support: tech@signalwayantibody.com

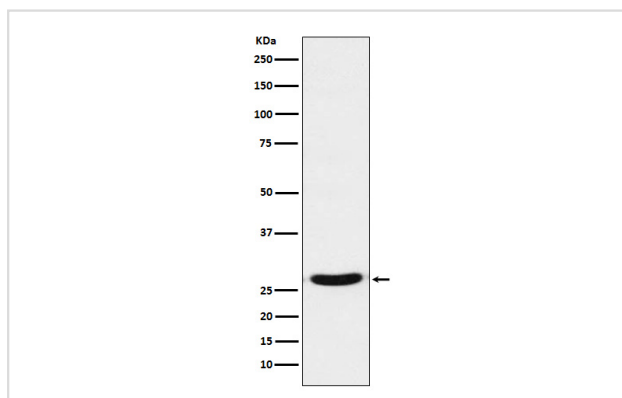
## Description

|                       |                                                                                                    |
|-----------------------|----------------------------------------------------------------------------------------------------|
| Product Name          | TCF21 Rabbit mAb                                                                                   |
| Host Species          | Rabbit                                                                                             |
| Clonality             | Monoclonal                                                                                         |
| Isotype               | Rabbit IgG                                                                                         |
| Purification          | Affinity-chromatography                                                                            |
| Applications          | WB IP FC                                                                                           |
| Species Reactivity    | Human                                                                                              |
| Specificity           | TCF21 Antibody detects endogenous levels of total TCF21                                            |
| Immunogen Description | A synthesized peptide derived from human TCF21                                                     |
| Other Names           | Capsulin; Epicardin; POD 1; POD1; TCF-21; tcf21;                                                   |
| Accession No.         | Uniprot:O43680                                                                                     |
| Uniprot               | O43680                                                                                             |
| Calculated MW         | 26kDa                                                                                              |
| Formulation           | Rabbit IgG in phosphate buffered saline , pH 7.4, 150mM NaCl, 0.02% sodium azide and 50% glycerol. |
| Storage               | Store at +4Λ C short term. Store at -20Λ C long term. Avoid freeze / thaw cycle.                   |

## Application Details

WB:1:500~1:2000IP:1:60FC:1:80

## Images



Western blot analysis of TCF21 expression in 293 cell lysate.

## Product Description

Involved in epithelial-mesenchymal interactions in kidney and lung morphogenesis that include epithelial differentiation and branching morphogenesis. May play a role in the specification or differentiation of one or more subsets of epicardial cell types.

---

Note: This product is for in vitro research use only