

## VPS11 Rabbit mAb

Catalog No: #56615

Package Size: #56615-1 50ul #56615-2 100ul

Orders: order@signalwayantibody.com

Support: tech@signalwayantibody.com

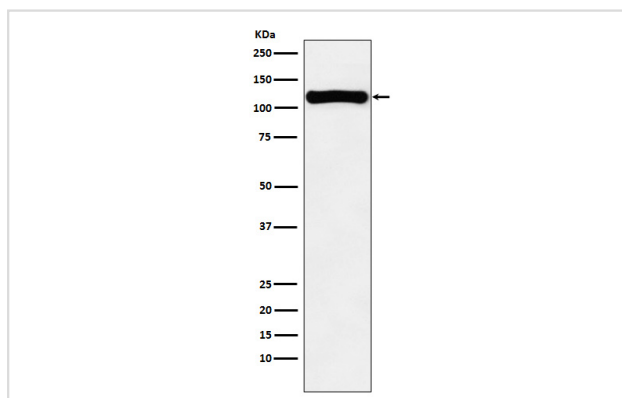
## Description

|                       |  |
|-----------------------|--|
| Product Name          | VPS11 Rabbit mAb   |
| Host Species          | Rabbit   |
| Clonality             | Monoclonal   |
| Isotype               | Rabbit IgG   |
| Purification          | Affinity-chromatography  |
| Applications          | WB IHC FC  |
| Species Reactivity    | Human Mouse  |
| Specificity           | VPS11 Antibody detects endogenous levels of total VPS11  |
| Immunogen Description | A synthesized peptide derived from human VPS11   |
| Other Names           | END1; hVPS11; PEP5; PP3476; RNF108; vps11;   |
| Accession No.         | Uniprot:Q9H270   |
| Uniprot               | Q9H270   |
| Calculated MW         | 108kDa   |
| Formulation           | Rabbit IgG in phosphate buffered saline , pH 7.4, 150mM NaCl, 0.02% sodium azide and 50% glycerol. |
| Storage               | Store at +4Λ C short term. Store at -20Λ C long term. Avoid freeze / thaw cycle.                   |

## Application Details

WB:1:500~1:2000IHC:1:50~1:200FC:1:80

## Images



Western blot analysis of VPS11 expression in K562 cell lysate.

## Product Description

May play a role in vesicle-mediated protein trafficking to lysosomal compartments and in membrane docking/fusion reactions of late endosomes/lysosomes.

---

Note: This product is for in vitro research use only