

Y14 Rabbit mAb

Catalog No: #56616

Package Size: #56616-1 50ul #56616-2 100ul

Orders: order@signalwayantibody.com

Support: tech@signalwayantibody.com

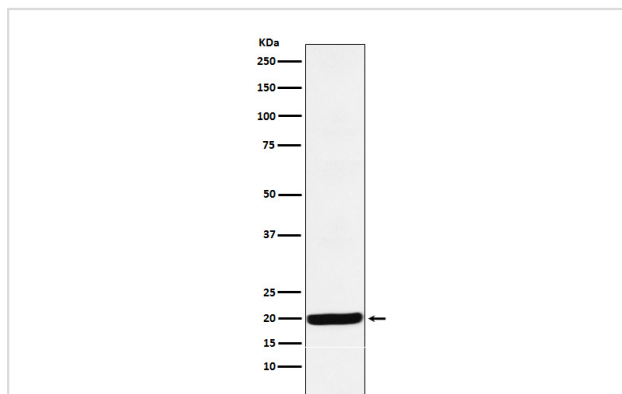
Description

Product Name	Y14 Rabbit mAb
Host Species	Rabbit
Clonality	Monoclonal
Isotype	Rabbit IgG
Purification	Affinity-chromatography
Applications	WB IHC ICC/IF IP FC
Species Reactivity	Human Mouse Rat
Specificity	Y14 Antibody detects endogenous levels of total Y14
Immunogen Description	A synthesized peptide derived from human Y14
Other Names	BOV1; BOV1A; BOV1B; BOV1C; HSPC114; MDS014; RBM 8; RBM 8A; RBM 8B; RBM8; rbm8a; RBM8B; ZNRP; ZRNP1;
Accession No.	Uniprot:Q9Y5S9
Uniprot	Q9Y5S9
Calculated MW	19kDa
Formulation	Rabbit IgG in phosphate buffered saline , pH 7.4, 150mM NaCl, 0.02% sodium azide and 50% glycerol.
Storage	Store at +4 Λ C short term. Store at -20 Λ C long term. Avoid freeze / thaw cycle.

Application Details

WB:1:500~1:2000IHC:1:50~1:200ICC/IF:1:50~1:200IP:1:50FC:1:50

Images



Western blot analysis of Y14 expression in HepG2 cell lysate.

Product Description

Component of a splicing-dependent multiprotein exon junction complex (EJC) deposited at splice junction on mRNAs. The EJC is a dynamic structure consisting of a few core proteins and several more peripheral nuclear and cytoplasmic associated factors that join the complex only transiently either during EJC assembly or during subsequent mRNA metabolism.

Note: This product is for in vitro research use only