

# ABCE1 Rabbit mAb

Catalog No: #56617

Package Size: #56617-1 50ul #56617-2 100ul

Orders: [order@signalwayantibody.com](mailto:order@signalwayantibody.com)

Support: [tech@signalwayantibody.com](mailto:tech@signalwayantibody.com)

## Description

Product Name	ABCE1 Rabbit mAb
Host Species	Rabbit
Clonality	Monoclonal
Isotype	Rabbit IgG
Purification	Affinity-chromatography
Applications	WB IHC ICC/IF IP FC
Species Reactivity	Human Mouse Rat
Specificity	ABCE1 Antibody detects endogenous levels of total ABCE1
Immunogen Description	A synthesized peptide derived from human ABCE1
Other Names	ABC38; ABCE1; HuHP68; OABP; RLI; RNASEL1; RNASELI; RNS4I;
Accession No.	Uniprot:P61221
Uniprot	P61221
Calculated MW	67kDa
Formulation	Rabbit IgG in 10mM phosphate buffered saline , pH 7.4, 150mM sodium chloride, 0.05% BSA, 0.02% sodium azide and 50% glycerol.
Storage	Store at +4 $\Lambda$ C short term. Store at -20 $\Lambda$ C long term. Avoid freeze / thaw cycle.

## Application Details

WB:1:1000~1:2000

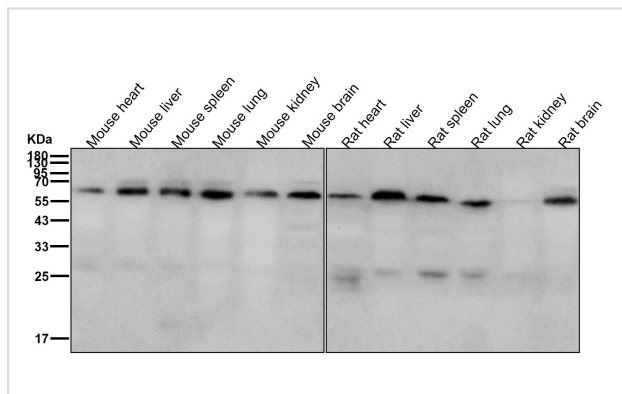
IHC:1:100~1:200

ICC/IF:1:50~1:200

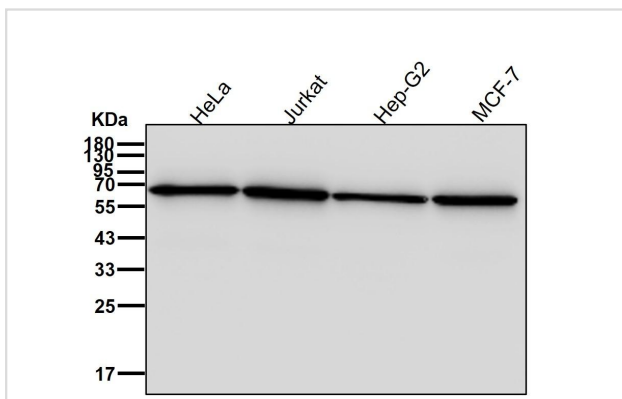
IP:1:50

FC:1:20~1:100

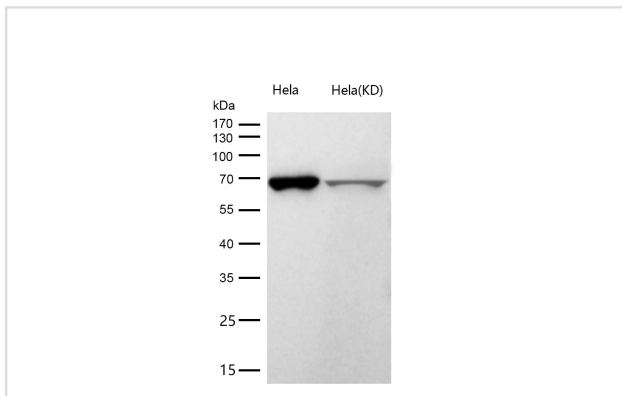
## Images



All lanes use the Antibody at 1:2K dilution for 1 hour at room temperature.



All lanes use the Antibody at 1:2K dilution for 1 hour at room temperature.



All lanes use the Antibody at 1:1K dilution for 1 hour at room temperature.

## Product Description

Antagonizes the binding of 2-5A (5'-phosphorylated 2',5'-linked oligoadenylates) by RNase L through direct interaction with RNase L and therefore inhibits its endoribonuclease activity.

## Background

Nucleoside-triphosphatase (NTPase) involved in ribosome recycling by mediating ribosome disassembly.

Note: This product is for in vitro research use only