

## ENT2 Rabbit mAb

Catalog No: #56618

Package Size: #56618-1 50ul #56618-2 100ul

Orders: order@signalwayantibody.com

Support: tech@signalwayantibody.com

## Description

Product Name	ENT2 Rabbit mAb
Host Species	Rabbit
Clonality	Monoclonal
Isotype	Rabbit IgG
Purification	Affinity-chromatography
Applications	WB IHC ICC/IF FC
Species Reactivity	Human Mouse Rat
Specificity	ENT2 Antibody detects endogenous levels of total ENT2
Immunogen Description	A synthesized peptide derived from human ENT2
Other Names	DER12; ei-type; HNP36; Nucleoside transporter; SLC29A2;
Accession No.	Uniprot:Q14542
Uniprot	Q14542
Calculated MW	55-65kDa
Formulation	Rabbit IgG in phosphate buffered saline , pH 7.4, 150mM NaCl, 0.02% sodium azide and 50% glycerol.
Storage	Store at +4°C short term. Store at -20°C long term. Avoid freeze / thaw cycle.

## Application Details

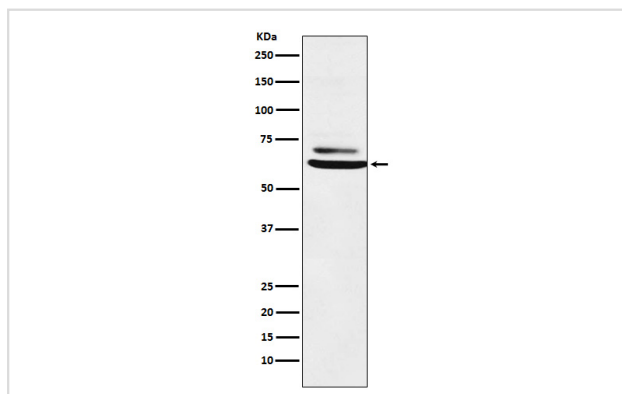
WB: 1:500~1:2000

IHC: 1:50~1:200

ICC/IF: 1:50~1:200

FC: 1:20

## Images



Western blot analysis of ENT2 expression in K562 cell lysate.

## Product Description

Mediates equilibrative transport of purine, pyrimidine nucleosides and the purine base hypoxanthine. Very less sensitive than SLC29A1 to inhibition by

nitrobenzylthioinosine (NBMPR), dipyridamole, dilazep and draflazine.

---

Note: This product is for in vitro research use only