

## Cyclophilin 40 Rabbit mAb

Catalog No: #56619

Package Size: #56619-1 50ul #56619-2 100ul

Orders: order@signalwayantibody.com

Support: tech@signalwayantibody.com

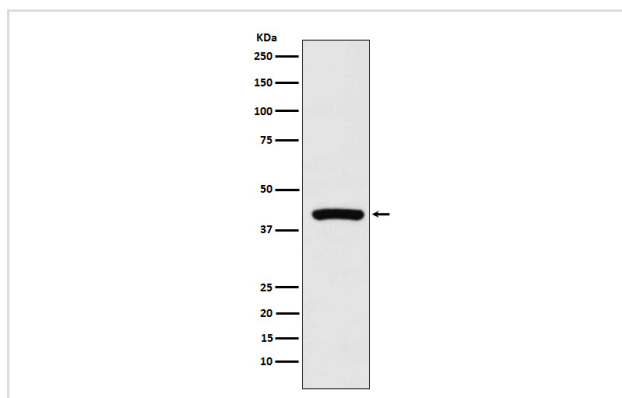
## Description

Product Name	Cyclophilin 40 Rabbit mAb
Host Species	Rabbit
Clonality	Monoclonal
Isotype	Rabbit IgG
Purification	Affinity-chromatography
Applications	WB IHC ICC/IF FC
Species Reactivity	Human Mouse Rat
Specificity	Cyclophilin 40 Antibody detects endogenous levels of total Cyclophilin 40
Immunogen Description	A synthesized peptide derived from human Cyclophilin 40
Other Names	Cyclophilin40; CyclophilinD; CYP40; CYPD; PPIase; PPIase D; Ppid; Rotamase; Rotamase D;
Accession No.	Uniprot:Q08752
Uniprot	Q08752
Calculated MW	41kDa
Formulation	Rabbit IgG in phosphate buffered saline , pH 7.4, 150mM NaCl, 0.02% sodium azide and 50% glycerol.
Storage	Store at +4Λ C short term. Store at -20Λ C long term. Avoid freeze / thaw cycle.

## Application Details

WB:1:1000~1:5000IHC:1:50~1:200ICC/IF:1:50~1:200FC:1:50

## Images



Western blot analysis of Cyclophilin 40 expression in K562 cell lysate.

## Product Description

PPIases accelerate the folding of proteins. It catalyzes the cis-trans isomerization of proline imidic peptide bonds in oligopeptides.

---

Note: This product is for in vitro research use only