

RAP1A + RAP1B Rabbit mAb

Catalog No: #56620

Package Size: #56620-1 50ul #56620-2 100ul

Orders: order@signalwayantibody.com

Support: tech@signalwayantibody.com

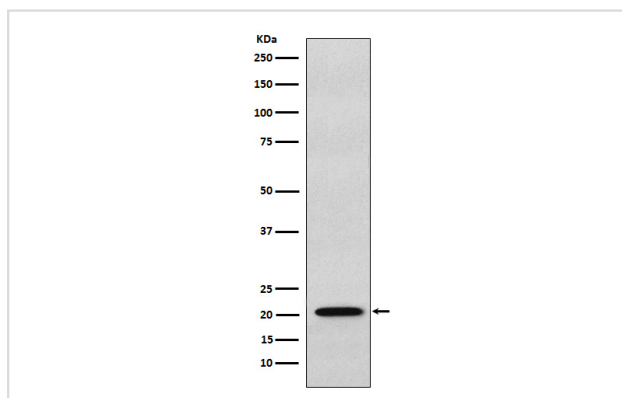
Description

Product Name	RAP1A + RAP1B Rabbit mAb
Host Species	Rabbit
Clonality	Monoclonal
Isotype	Rabbit IgG
Purification	Affinity-chromatography
Applications	WB IP FC
Species Reactivity	Human Mouse Rat
Specificity	RAP1A + RAP1B Antibody detects endogenous levels of total RAP1A + RAP1B
Immunogen Description	A synthesized peptide derived from human RAP1A + RAP1B
Other Names	C21KG; G 22K; K REV; KREV 1; KREV; KREV1; RAL1B; RAP 1; RAP 1A; RAP 1B; RAP1; RAP1B; SMGP21;
Accession No.	Uniprot:P61224/P62834
Uniprot	P61224/P62834
Calculated MW	21kDa
Formulation	Rabbit IgG in phosphate buffered saline , pH 7.4, 150mM NaCl, 0.02% sodium azide and 50% glycerol.
Storage	Store at +4 Λ C short term. Store at -20 Λ C long term. Avoid freeze / thaw cycle.

Application Details

WB:1:1000~1:5000IP:1:50FC:1:40

Images



Western blot analysis of RAP1A + RAP1B expression in HeLa cell lysate.

Product Description

RAP1A and RAP1B belong to a family of RAS-related proteins. These proteins share approximately 50% amino acid identity with the classical RAS proteins and have numerous structural features in common.

Note: This product is for in vitro research use only