

## POLR2C Rabbit mAb

Catalog No: #56622

Package Size: #56622-1 50ul #56622-2 100ul

Orders: order@signalwayantibody.com

Support: tech@signalwayantibody.com

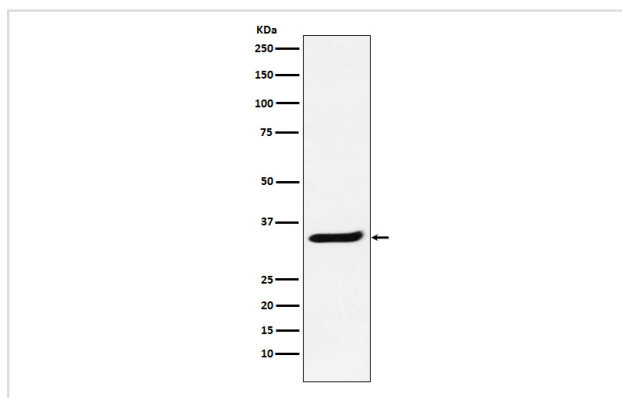
## Description

Product Name	POLR2C Rabbit mAb
Host Species	Rabbit
Clonality	Monoclonal
Isotype	Rabbit IgG
Purification	Affinity-chromatography
Applications	WB IHC
Species Reactivity	Human Mouse Rat
Specificity	POLR2C Antibody detects endogenous levels of total POLR2C
Immunogen Description	A synthesized peptide derived from human POLR2C
Other Names	hRPB33; hsRPB3; Polr2c; RPB3; RPB31; RPB33;
Accession No.	Uniprot:P19387
Uniprot	P19387
Calculated MW	33kDa
Formulation	Rabbit IgG in phosphate buffered saline , pH 7.4, 150mM NaCl, 0.02% sodium azide and 50% glycerol.
Storage	Store at +4Λ C short term. Store at -20Λ C long term. Avoid freeze / thaw cycle.

## Application Details

WB:1:1000~1:5000IHC:1:50~1:200

## Images



Western blot analysis of POLR2C expression in Jurkat cell lysate.

## Product Description

DNA-dependent RNA polymerase catalyzes the transcription of DNA into RNA using the four ribonucleoside triphosphates as substrates. Component of RNA polymerase II which synthesizes mRNA precursors and many functional non-coding RNAs.

---

Note: This product is for in vitro research use only