

MAD1 Rabbit mAb

Catalog No: #56623

Package Size: #56623-1 50ul #56623-2 100ul

Orders: order@signalwayantibody.com

Support: tech@signalwayantibody.com

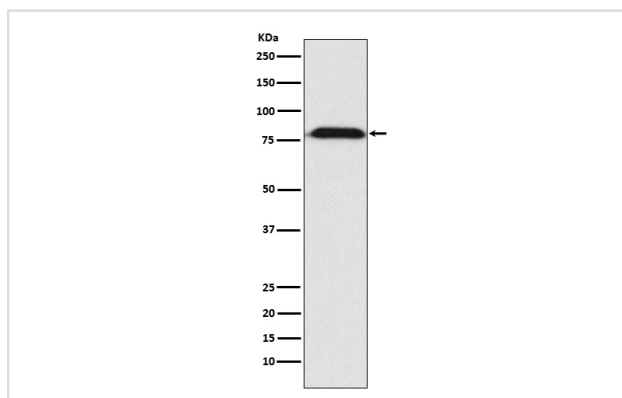
Description

Product Name	MAD1 Rabbit mAb
Host Species	Rabbit
Clonality	Monoclonal
Isotype	Rabbit IgG
Purification	Affinity-chromatography
Applications	WB
Species Reactivity	Human Mouse Rat
Specificity	MAD1 Antibody detects endogenous levels of total MAD1
Immunogen Description	A synthesized peptide derived from human MAD1
Other Names	hMAD1; HsMAD1; MAD1; MAD1L1; PIG9; TP53I9; TXBP181;
Accession No.	Uniprot:Q9Y6D9
Uniprot	Q9Y6D9
Calculated MW	80kDa
Formulation	Rabbit IgG in phosphate buffered saline , pH 7.4, 150mM NaCl, 0.02% sodium azide and 50% glycerol.
Storage	Store at +4Λ C short term. Store at -20Λ C long term. Avoid freeze / thaw cycle.

Application Details

WB: 1:500~1:2000

Images



Western blot analysis of MAD1 expression in A431 cell lysate.

Product Description

Component of the spindle-assembly checkpoint that prevents the onset of anaphase until all chromosomes are properly aligned at the metaphase plate.

Note: This product is for in vitro research use only