

## PAR2 Rabbit mAb

Catalog No: #56626

Package Size: #56626-1 50ul #56626-2 100ul

Orders: order@signalwayantibody.com

Support: tech@signalwayantibody.com

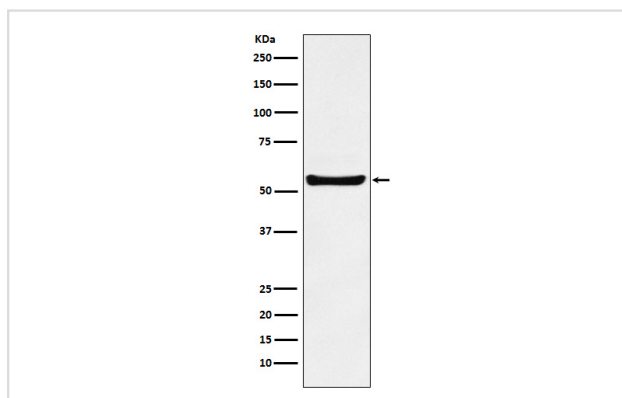
## Description

Product Name	PAR2 Rabbit mAb
Host Species	Rabbit
Clonality	Monoclonal
Isotype	Rabbit IgG
Purification	Affinity-chromatography
Applications	WB IHC ICC/IF FC
Species Reactivity	Human Mouse Rat
Specificity	PAR2 Antibody detects endogenous levels of total PAR2
Immunogen Description	A synthesized peptide derived from human PAR2
Other Names	F2RL1; GPR11; PAR 2;
Accession No.	Uniprot:P55085
Uniprot	P55085
Calculated MW	55kDa
Formulation	Rabbit IgG in phosphate buffered saline , pH 7.4, 150mM NaCl, 0.02% sodium azide and 50% glycerol.
Storage	Store at +4Λ C short term. Store at -20Λ C long term. Avoid freeze / thaw cycle.

## Application Details

WB:1:500~1:2000IHC:1:50~1:200ICC/IF:1:50~1:200FC:1:50

## Images



Western blot analysis of PAR2 expression in K562 cell lysate.

## Product Description

Receptor for trypsin and trypsin-like enzymes coupled to G proteins that stimulate phosphoinositide hydrolysis. May have a role in the regulation of vascular tone.

---

Note: This product is for in vitro research use only