

MAG Rabbit mAb

Catalog No: #56627

Package Size: #56627-1 50ul #56627-2 100ul

Orders: order@signalwayantibody.com

Support: tech@signalwayantibody.com

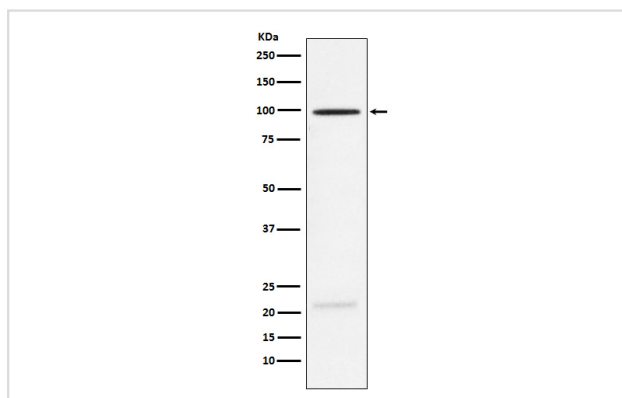
Description

Product Name	MAG Rabbit mAb
Host Species	Rabbit
Clonality	Monoclonal
Isotype	Rabbit IgG
Purification	Affinity-chromatography
Applications	WB IP FC
Species Reactivity	Human Mouse Rat
Specificity	MAG Antibody detects endogenous levels of total MAG
Immunogen Description	A synthesized peptide derived from human MAG
Other Names	GMA; MAG; S MAG; SIGLEC4A; SPG75;
Accession No.	Uniprot:P20916
Uniprot	P20916
Calculated MW	100kDa
Formulation	Rabbit IgG in phosphate buffered saline , pH 7.4, 150mM NaCl, 0.02% sodium azide and 50% glycerol.
Storage	Store at +4Λ C short term. Store at -20Λ C long term. Avoid freeze / thaw cycle.

Application Details

WB:1:500~1:2000IP:1:50FC:1:20

Images



Western blot analysis of MAG expression in Rat brain lysate.

Product Description

Adhesion molecule in postnatal neural development that mediates sialic-acid dependent cell-cell interactions between neuronal and myelinating cells. Preferentially binds to alpha-2,3-linked sialic acid.

Note: This product is for in vitro research use only