

Renalase Rabbit mAb

Catalog No: #56635

Package Size: #56635-1 50ul #56635-2 100ul

Orders: order@signalwayantibody.com

Support: tech@signalwayantibody.com

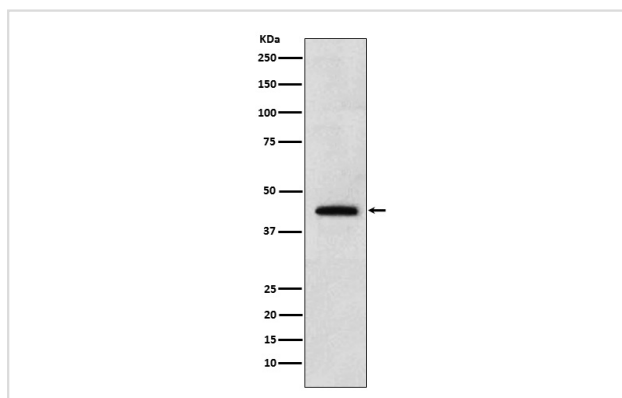
Description

Product Name	Renalase Rabbit mAb
Host Species	Rabbit
Clonality	Monoclonal
Isotype	Rabbit IgG
Purification	Affinity-chromatography
Applications	WB IHC
Species Reactivity	Human Mouse Rat
Specificity	Renalase Antibody detects endogenous levels of total Renalase
Immunogen Description	A synthesized peptide derived from human Renalase
Other Names	MAO C; mMAO C; Renalase; RNLS;
Accession No.	Uniprot:Q5VYX0
Uniprot	Q5VYX0
Calculated MW	42kDa
Formulation	Rabbit IgG in phosphate buffered saline , pH 7.4, 150mM NaCl, 0.02% sodium azide and 50% glycerol.
Storage	Store at +4Λ C short term. Store at -20Λ C long term. Avoid freeze / thaw cycle.

Application Details

WB:1:500~1:2000IHC:1:50~1:200

Images



Western blot analysis of Renalase expression in 293T cell lysate.

Product Description

Probable FAD-dependent amine oxidase secreted by the kidney, which circulates in blood and modulates cardiac function and systemic blood pressure. Degrades catecholamines such as dopamine, norepinephrine and epinephrine in vitro.

Note: This product is for in vitro research use only