

## CAPG Rabbit mAb

Catalog No: #56636

Package Size: #56636-1 50ul #56636-2 100ul

Orders: order@signalwayantibody.com

Support: tech@signalwayantibody.com

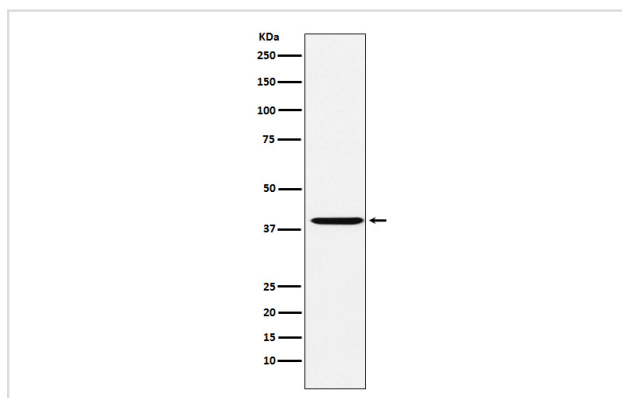
## Description

Product Name	CAPG Rabbit mAb
Host Species	Rabbit
Clonality	Monoclonal
Isotype	Rabbit IgG
Purification	Affinity-chromatography
Applications	WB
Species Reactivity	Human Mouse Rat
Specificity	CAPG Antibody detects endogenous levels of total CAPG
Immunogen Description	A synthesized peptide derived from human CAPG
Other Names	AFCP; Capg; gCap39; HEL S 66; mbh1; MCP;
Accession No.	Uniprot:P40121
Uniprot	P40121
Calculated MW	38kDa
Formulation	Rabbit IgG in phosphate buffered saline , pH 7.4, 150mM NaCl, 0.02% sodium azide and 50% glycerol.
Storage	Store at +4Λ C short term. Store at -20Λ C long term. Avoid freeze / thaw cycle.

## Application Details

WB: 1:500~1:2000

## Images



Western blot analysis of CAPG expression in HeLa cell lysate.

## Product Description

Calcium-sensitive protein which reversibly blocks the barbed ends of actin filaments but does not sever preformed actin filaments. May play an important role in macrophage function.

---

Note: This product is for in vitro research use only