

## c-Maf Rabbit mAb

Catalog No: #56639

Package Size: #56639-1 50ul #56639-2 100ul

Orders: order@signalwayantibody.com

Support: tech@signalwayantibody.com

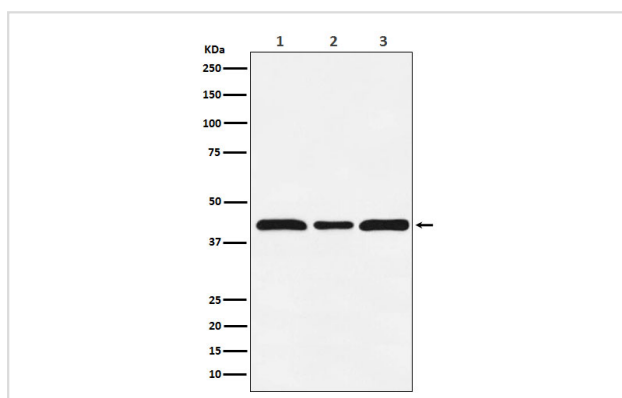
## Description

Product Name	c-Maf Rabbit mAb
Host Species	Rabbit
Clonality	Monoclonal
Isotype	Rabbit IgG
Purification	Affinity-chromatography
Applications	WB
Species Reactivity	Human Mouse Rat
Specificity	c-Maf Antibody detects endogenous levels of total c-Maf
Immunogen Description	A synthesized peptide derived from human c-Maf
Other Names	cMaf; maf; MAF2; Proto oncogene c Maf;
Accession No.	Uniprot:O75444
Uniprot	O75444
Calculated MW	44kDa
Concentration	1.5mg/ml
Formulation	Rabbit IgG in 10mM phosphate buffered saline , pH 7.4, 150mM sodium chloride, 0.05% BSA, 0.02% sodium azide and 50% glycerol.
Storage	Store at +4Λ C short term. Store at -20Λ C long term. Avoid freeze / thaw cycle.

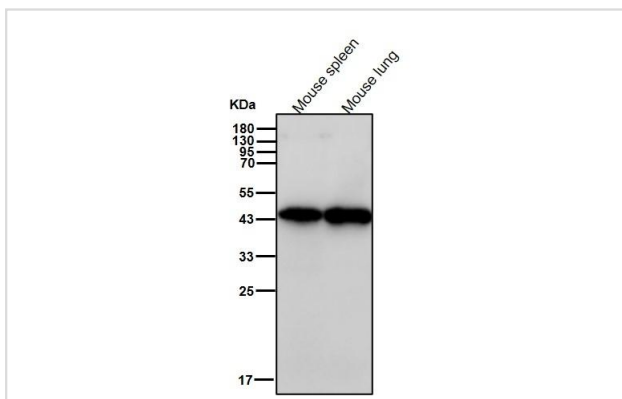
## Application Details

WB 1:1000-1:2000

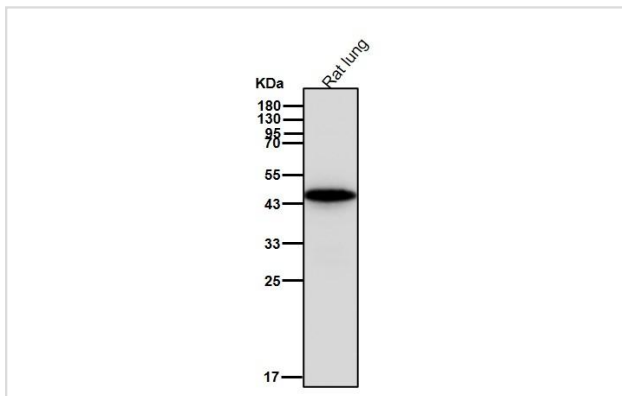
## Images



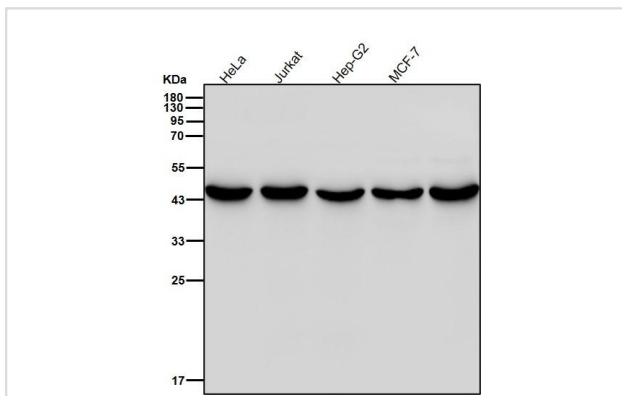
Western blot analysis of c-Maf expression in (1) HUVEC cell lysate; (2) NIH/3T3 cell lysate; (3) PC12 cell lysate.



All lanes use the Antibody at 1:2K dilution for 1 hour at room temperature.



All lanes use the Antibody at 1:2K dilution for 1 hour at room temperature.



All lanes use the Antibody at 1:2K dilution for 1 hour at room temperature.

## Product Description

Acts as a transcriptional activator or repressor. Involved in embryonic lens fiber cell development. Recruits the transcriptional coactivators CREBBP and/or EP300 to crystallin promoters leading to up-regulation of crystallin gene during lens fiber cell differentiation. Activates the expression of IL4 in T helper 2 (Th2) cells.

Note: This product is for in vitro research use only