

## Carboxypeptidase A1+A2+B Rabbit mAb

Catalog No: #56640

Package Size: #56640-1 50ul #56640-2 100ul

Orders: order@signalwayantibody.com

Support: tech@signalwayantibody.com

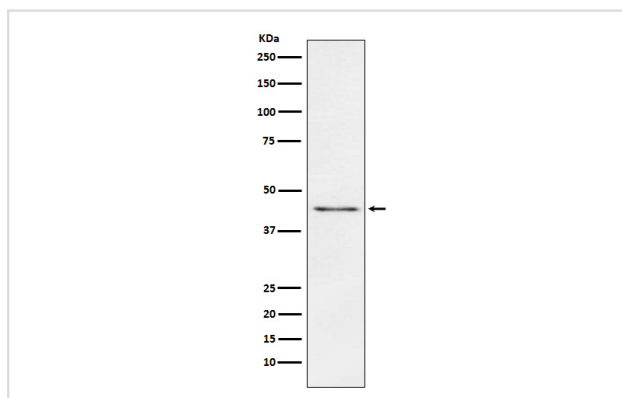
## Description

Product Name	Carboxypeptidase A1+A2+B Rabbit mAb
Host Species	Rabbit
Clonality	Monoclonal
Isotype	Rabbit IgG
Purification	Affinity-chromatography
Applications	WB IHC ICC/IF
Species Reactivity	Human Mouse Rat
Specificity	Carboxypeptidase A1+A2+B Antibody detects endogenous levels of total Carboxypeptidase A1+A2+B
Immunogen Description	A synthesized peptide derived from human Carboxypeptidase A1+A2+B
Other Names	Carboxypeptidase A1+A2+B;
Accession No.	Uniprot:P15085/P15086/P48052
Uniprot	P15085/P15086/P48052
Calculated MW	44kDa
Formulation	Rabbit IgG in phosphate buffered saline , pH 7.4, 150mM NaCl, 0.02% sodium azide and 50% glycerol.
Storage	Store at +4Λ C short term. Store at -20Λ C long term. Avoid freeze / thaw cycle.

## Application Details

WB:1:500~1:2000IHC:1:50~1:200ICC/IF:1:50~1:200

## Images



Western blot analysis of Carboxypeptidase A1+A2+B expression in Mouse pancreas lysate.

## Product Description

Preferential release of a C-terminal lysine or arginine amino acid

---

Note: This product is for in vitro research use only