

## CRMP5 Rabbit mAb

Catalog No: #56646

Package Size: #56646-1 50ul #56646-2 100ul

Orders: order@signalwayantibody.com

Support: tech@signalwayantibody.com

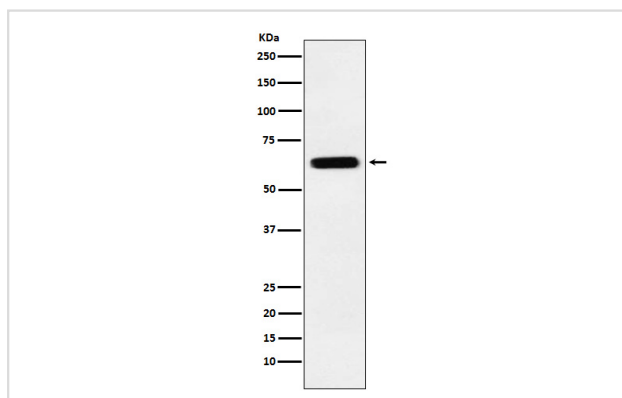
## Description

Product Name	CRMP5 Rabbit mAb
Host Species	Rabbit
Clonality	Monoclonal
Isotype	Rabbit IgG
Purification	Affinity-chromatography
Applications	WB IHC IP
Species Reactivity	Human Mouse Rat
Specificity	CRMP5 Antibody detects endogenous levels of total CRMP5
Immunogen Description	A synthesized peptide derived from human CRMP5
Other Names	CRAM; DPYSL5; DRP5; Ulip6;
Accession No.	Uniprot:Q9BPU6
Uniprot	Q9BPU6
Calculated MW	61kDa
Formulation	Rabbit IgG in phosphate buffered saline , pH 7.4, 150mM NaCl, 0.02% sodium azide and 50% glycerol.
Storage	Store at +4 $\Lambda$ C short term. Store at -20 $\Lambda$ C long term. Avoid freeze / thaw cycle.

## Application Details

WB:1:1000~1:5000IHC:1:50~1:200IP:1:50

## Images



Western blot analysis of CRMP5 expression in SH-SY5Y cell lysate.

## Product Description

May have a function in neuronal differentiation and/or axon growth.

---

Note: This product is for in vitro research use only