

ZBTB7A Rabbit mAb

Catalog No: #56647

Package Size: #56647-1 50ul #56647-2 100ul

Orders: order@signalwayantibody.com

Support: tech@signalwayantibody.com

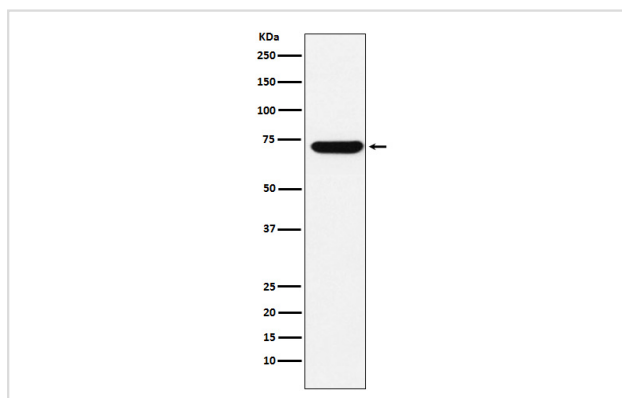
Description

Product Name	ZBTB7A Rabbit mAb
Host Species	Rabbit
Clonality	Monoclonal
Isotype	Rabbit IgG
Purification	Affinity-chromatography
Applications	WB IHC ICC/IF IP
Species Reactivity	Human
Specificity	ZBTB7A Antibody detects endogenous levels of total ZBTB7A
Immunogen Description	A synthesized peptide derived from human ZBTB7A
Other Names	FBI1; LRF; Pokemon; TIP21; ZBTB7; ZBTB7A; ZNF857A;
Accession No.	Uniprot:O95365
Uniprot	O95365
Calculated MW	70kDa
Formulation	Rabbit IgG in phosphate buffered saline , pH 7.4, 150mM NaCl, 0.02% sodium azide and 50% glycerol.
Storage	Store at +4 Λ C short term. Store at -20 Λ C long term. Avoid freeze / thaw cycle.

Application Details

WB:1:1000~1:5000IHC:1:50~1:200ICC/IF:1:50~1:200IP:1:50

Images



Western blot analysis of ZBTB7A expression in HepG2 cell lysate.

Product Description

Plays a key role in the instruction of early lymphoid progenitors to develop into B lineage by repressing T-cell instructive Notch signals (By similarity).

Note: This product is for in vitro research use only