

## PAF1 Rabbit mAb

Catalog No: #56649

Package Size: #56649-1 50ul #56649-2 100ul

Orders: order@signalwayantibody.com

Support: tech@signalwayantibody.com

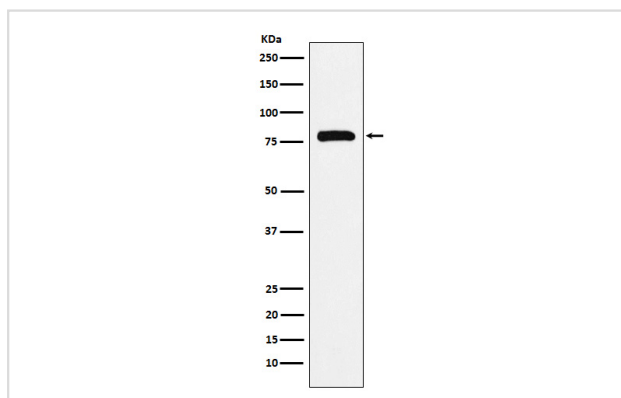
## Description

Product Name	PAF1 Rabbit mAb
Host Species	Rabbit
Clonality	Monoclonal
Isotype	Rabbit IgG
Purification	Affinity-chromatography
Applications	WB
Species Reactivity	Human Mouse Rat
Specificity	PAF1 Antibody detects endogenous levels of total PAF1
Immunogen Description	A synthesized peptide derived from human PAF1
Other Names	hPAF1; PAF1; PD2;
Accession No.	Uniprot:Q8N7H5
Uniprot	Q8N7H5
Calculated MW	80kDa
Formulation	Rabbit IgG in phosphate buffered saline , pH 7.4, 150mM NaCl, 0.02% sodium azide and 50% glycerol.
Storage	Store at +4 $\Lambda$ C short term. Store at -20 $\Lambda$ C long term. Avoid freeze / thaw cycle.

## Application Details

WB: 1:500~1:2000

## Images



Western blot analysis of PAF1 expression in K562 cell lysate.

## Product Description

The mammalian PAF1 complex is a multifunctional complex. The PAF1 complex interacts with RNA polymerase II and may be involved in both initiation and elongation, and in histone methylation and RNA processing. Has oncogenic activity in vivo and in vitro.

---

Note: This product is for in vitro research use only