

EBP1 / PA2G4 Rabbit mAb

Catalog No: #56650

Package Size: #56650-1 50ul #56650-2 100ul

Orders: order@signalwayantibody.com

Support: tech@signalwayantibody.com

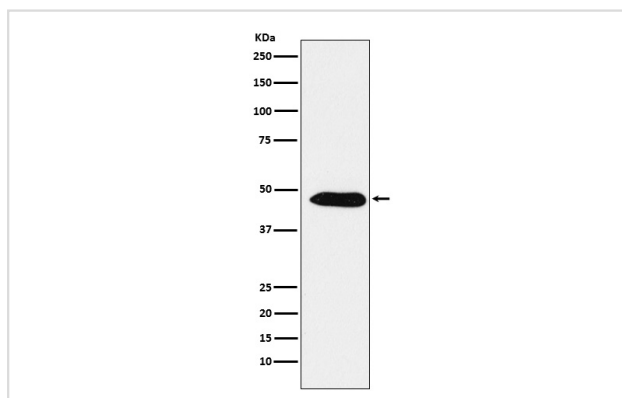
Description

Product Name	EBP1 / PA2G4 Rabbit mAb
Host Species	Rabbit
Clonality	Monoclonal
Isotype	Rabbit IgG
Purification	Affinity-chromatography
Applications	WB IHC ICC/IF IP FC
Species Reactivity	Human Mouse Rat
Specificity	EBP1 / PA2G4 Antibody detects endogenous levels of total EBP1 / PA2G4
Immunogen Description	A synthesized peptide derived from human EBP1 / PA2G4
Other Names	hG4 1; Mpp1; p38 2G4; Pa2g4; Plfap;
Accession No.	Uniprot:Q9UQ80
Uniprot	Q9UQ80
Calculated MW	48kDa
Formulation	Rabbit IgG in phosphate buffered saline , pH 7.4, 150mM NaCl, 0.02% sodium azide and 50% glycerol.
Storage	Store at +4 Λ C short term. Store at -20 Λ C long term. Avoid freeze / thaw cycle.

Application Details

WB:1:1000~1:5000IHC:1:50~1:200ICC/IF:1:50~1:200IP:1:40FC:1:30

Images



Western blot analysis of EBP1 / PA2G4 expression in A431 cell lysate.

Product Description

May play a role in a ERBB3-regulated signal transduction pathway. Seems be involved in growth regulation. Acts a corepressor of the androgen receptor (AR) and is regulated by the ERBB3 ligand neuregulin-1/herregulin (HRG).

Note: This product is for in vitro research use only