

ROR2 Rabbit mAb

Catalog No: #56653

Package Size: #56653-1 50ul #56653-2 100ul

Orders: order@signalwayantibody.com

Support: tech@signalwayantibody.com

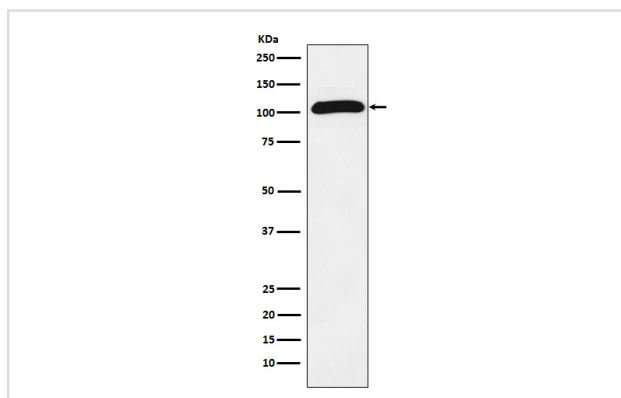
Description

Product Name	ROR2 Rabbit mAb
Host Species	Rabbit
Clonality	Monoclonal
Isotype	Rabbit IgG
Purification	Affinity-chromatography
Applications	WB ICC/IF FC
Species Reactivity	Human
Specificity	ROR2 Antibody detects endogenous levels of total ROR2
Immunogen Description	A synthesized peptide derived from human ROR2
Other Names	BDB; BDB1; NTRKR2; ROR2;
Accession No.	Uniprot:Q01974
Uniprot	Q01974
Calculated MW	105kDa
Formulation	Rabbit IgG in phosphate buffered saline , pH 7.4, 150mM NaCl, 0.02% sodium azide and 50% glycerol.
Storage	Store at +4 Λ C short term. Store at -20 Λ C long term. Avoid freeze / thaw cycle.

Application Details

WB:1:500~1:2000IC/IF:1:50~1:200FC:1:50

Images



Western blot analysis of ROR2 expression in Saos-2 cell lysate.

Product Description

Tyrosine-protein kinase receptor which may be involved in the early formation of the chondrocytes. It seems to be required for cartilage and growth plate development. Phosphorylates YWHAB, leading to induction of osteogenesis and bone formation.

Note: This product is for in vitro research use only