

## KDM4B / JMJD2B Rabbit mAb

Catalog No: #56662

Package Size: #56662-1 50ul #56662-2 100ul

Orders: order@signalwayantibody.com

Support: tech@signalwayantibody.com

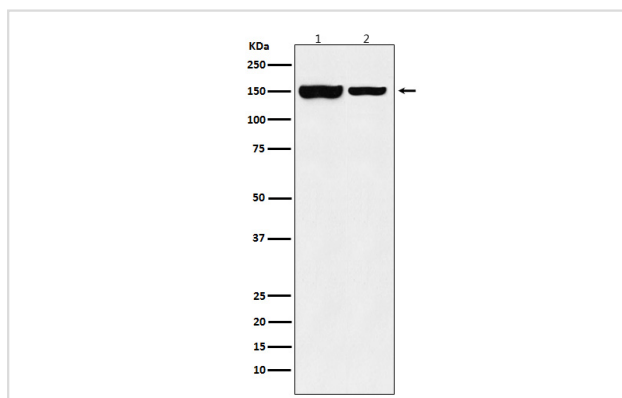
## Description

Product Name	KDM4B / JMJD2B Rabbit mAb
Host Species	Rabbit
Clonality	Monoclonal
Isotype	Rabbit IgG
Purification	Affinity-chromatography
Applications	WB IHC ICC/IF FC
Species Reactivity	Human Mouse Rat
Specificity	KDM4B / JMJD2B Antibody detects endogenous levels of total KDM4B / JMJD2B
Immunogen Description	A synthesized peptide derived from human KDM4B / JMJD2B
Other Names	JHDM3B; JMJD2B; Kdm4b; TDRD14B;
Accession No.	Uniprot:O94953
Uniprot	O94953
Calculated MW	150kDa
Formulation	Rabbit IgG in phosphate buffered saline , pH 7.4, 150mM NaCl, 0.02% sodium azide and 50% glycerol.
Storage	Store at +4 $\Lambda$ C short term. Store at -20 $\Lambda$ C long term. Avoid freeze / thaw cycle.

## Application Details

WB:1:500~1:2000IHC:1:50~1:200ICC/IF:1:50~1:200FC:1:200

## Images



Western blot analysis of KDM4B / JMJD2B expression in (1) SW480 cell lysate; (2) Mouse testis cell lysate.

## Product Description

Histone demethylase that specifically demethylates 'Lys-9' of histone H3, thereby playing a role in histone code. Does not demethylate histone H3 'Lys-4', H3 'Lys-27', H3 'Lys-36' nor H4 'Lys-20'. Only able to demethylate trimethylated H3 'Lys-9', with a weaker activity than KDM4A, KDM4C and KDM4D. Demethylation of Lys residue generates formaldehyde and succinate.

---

Note: This product is for in vitro research use only