

## Fibrinogen alpha chain Rabbit mAb

Catalog No: #56664

Package Size: #56664-1 50ul #56664-2 100ul

Orders: order@signalwayantibody.com

Support: tech@signalwayantibody.com

## Description

Product Name	Fibrinogen alpha chain Rabbit mAb
Host Species	Rabbit
Clonality	Monoclonal
Isotype	Rabbit IgG
Purification	Affinity-chromatography
Applications	WB IHC ICC/IF IP FC
Species Reactivity	Human Mouse Rat
Specificity	Fibrinogen alpha chain Antibody detects endogenous levels of total Fibrinogen alpha chain
Immunogen Description	A synthesized peptide derived from human Fibrinogen alpha chain
Other Names	Fba5e; FGA; Fib; Fib2; Fibrinopeptide A;
Accession No.	Uniprot:P02671
Uniprot	P02671
Calculated MW	95kDa
Formulation	Rabbit IgG in phosphate buffered saline , pH 7.4, 150mM NaCl, 0.02% sodium azide and 50% glycerol.
Storage	Store at +4°C short term. Store at -20°C long term. Avoid freeze / thaw cycle.

## Application Details

WB: 1:500~1:2000

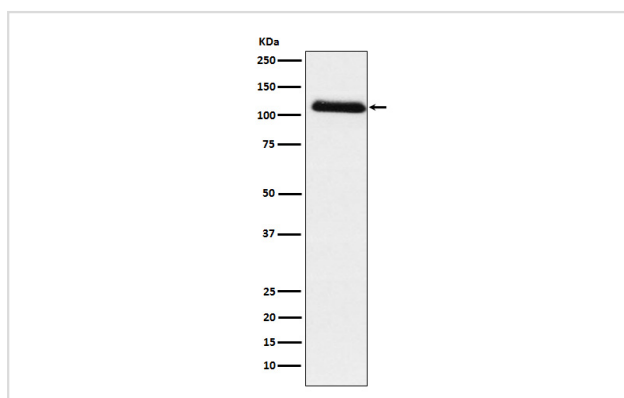
IHC: 1:50~1:200

ICC/IF: 1:50~1:200

IP: 1:50

FC: 1:50

## Images



Western blot analysis of Fibrinogen alpha chain expression in Human plasma lysate.

## Product Description

---

Fibrinogen has a double function: yielding monomers that polymerize into fibrin and acting as a cofactor in platelet aggregation.

---

Note: This product is for in vitro research use only