

TRIM29 Rabbit mAb

Catalog No: #56666

Package Size: #56666-1 50ul #56666-2 100ul

Orders: order@signalwayantibody.com

Support: tech@signalwayantibody.com

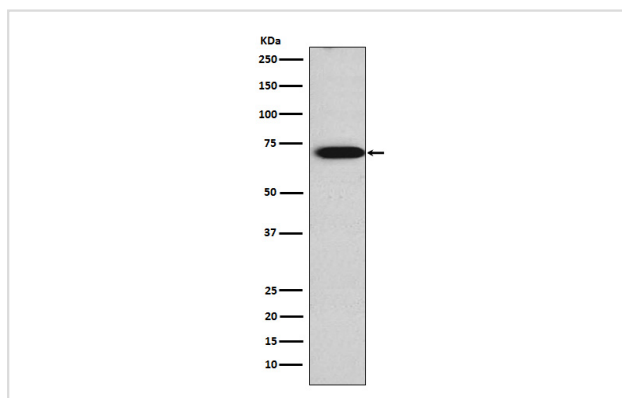
Description

Product Name	TRIM29 Rabbit mAb
Host Species	Rabbit
Clonality	Monoclonal
Isotype	Rabbit IgG
Purification	Affinity-chromatography
Applications	WB
Species Reactivity	Human Mouse Rat
Specificity	TRIM29 Antibody detects endogenous levels of total TRIM29
Immunogen Description	A synthesized peptide derived from human TRIM29
Other Names	ATDC; TRIM29;
Accession No.	Uniprot:Q14134
Uniprot	Q14134
Calculated MW	68kDa
Formulation	Rabbit IgG in phosphate buffered saline , pH 7.4, 150mM NaCl, 0.02% sodium azide and 50% glycerol.
Storage	Store at +4 Λ C short term. Store at -20 Λ C long term. Avoid freeze / thaw cycle.

Application Details

WB: 1:500~1:2000

Images



Western blot analysis of TRIM29 expression in JAR cell lysate.

Product Description

It is able to complement the radiosensitivity defect of an ataxia telangiectasia (AT) fibroblast cell line.

Note: This product is for in vitro research use only