

## alpha 1 Spectrin Rabbit mAb

Catalog No: #56667

Package Size: #56667-1 50ul #56667-2 100ul

Orders: order@signalwayantibody.com

Support: tech@signalwayantibody.com

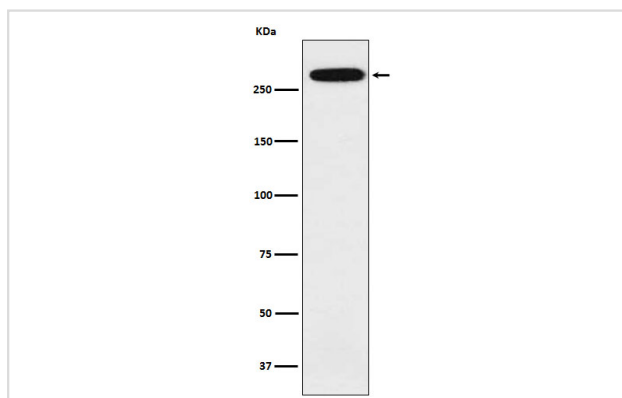
## Description

Product Name	alpha 1 Spectrin Rabbit mAb
Host Species	Rabbit
Clonality	Monoclonal
Isotype	Rabbit IgG
Purification	Affinity-chromatography
Applications	WB ICC/IF FC
Species Reactivity	Human Mouse Rat
Specificity	alpha 1 Spectrin Antibody detects endogenous levels of total alpha 1 Spectrin
Immunogen Description	A synthesized peptide derived from human alpha 1 Spectrin
Other Names	EL2; Elliptocytosis2; erythrocyte; Erythroid alpha spectrin; HPP; HS3; SPH3; SPTA; SPTA1;
Accession No.	Uniprot:P02549
Uniprot	P02549
Calculated MW	280kDa
Formulation	Rabbit IgG in phosphate buffered saline , pH 7.4, 150mM NaCl, 0.02% sodium azide and 50% glycerol.
Storage	Store at +4Λ C short term. Store at -20Λ C long term. Avoid freeze / thaw cycle.

## Application Details

WB:1:500~1:2000IC/IF:1:50~1:200FC:1:100

## Images



Western blot analysis of alpha 1 Spectrin expression in K562 cell lysate.

## Product Description

Spectrin is the major constituent of the cytoskeletal network underlying the erythrocyte plasma membrane. It associates with band 4.1 and actin to form the cytoskeletal superstructure of the erythrocyte plasma membrane.

---

Note: This product is for in vitro research use only