

Salivary alpha amylase Rabbit mAb

Catalog No: #56668

Package Size: #56668-1 50ul #56668-2 100ul

Orders: order@signalwayantibody.com

Support: tech@signalwayantibody.com

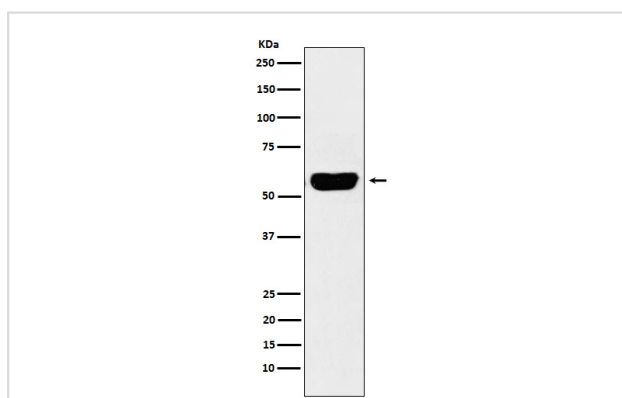
Description

Product Name	Salivary alpha amylase Rabbit mAb
Host Species	Rabbit
Clonality	Monoclonal
Isotype	Rabbit IgG
Purification	Affinity-chromatography
Applications	WB
Species Reactivity	Human
Specificity	Salivary alpha amylase Antibody detects endogenous levels of total Salivary alpha amylase
Immunogen Description	A synthesized peptide derived from human Salivary alpha amylase
Other Names	Alpha amylase; AMY1; AMY1C; AMY2; AMY2B; AMY3; HXA;
Accession No.	Uniprot:P04745
Uniprot	P04745
Calculated MW	58kDa
Formulation	Rabbit IgG in phosphate buffered saline , pH 7.4, 150mM NaCl, 0.02% sodium azide and 50% glycerol.
Storage	Store at +4Λ C short term. Store at -20Λ C long term. Avoid freeze / thaw cycle.

Application Details

WB: 1:500~1:2000

Images



Western blot analysis of Salivary alpha amylase expression in Human pancreas lysate.

Product Description

Belongs to the glycosyl hydrolase 13 family.

Note: This product is for in vitro research use only