

CCL4/MIP1 beta Rabbit mAb

Catalog No: #56669

Package Size: #56669-1 50ul #56669-2 100ul

Orders: order@signalwayantibody.com

Support: tech@signalwayantibody.com

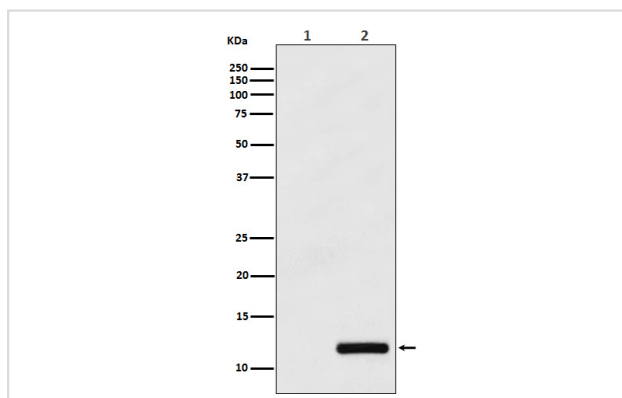
Description

Product Name	CCL4/MIP1 beta Rabbit mAb
Host Species	Rabbit
Clonality	Monoclonal
Isotype	Rabbit IgG
Purification	Affinity-chromatography
Applications	WB ICC/IF IP
Species Reactivity	Human Mouse
Specificity	CCL4/MIP1 beta Antibody detects endogenous levels of total CCL4/MIP1 beta
Immunogen Description	A synthesized peptide derived from human CCL4/MIP1 beta
Other Names	ACT2; G-26; HC21; LAG1; LAG-1; MIP1B; SCYA2; SCYA4; MIP1B1; AT744.1;MIP-1-beta;
Accession No.	Uniprot:P13236
Uniprot	P13236
Calculated MW	12kDa
Formulation	Rabbit IgG in phosphate buffered saline , pH 7.4, 150mM NaCl, 0.02% sodium azide and 50% glycerol.
Storage	Store at +4 Λ C short term. Store at -20 Λ C long term. Avoid freeze / thaw cycle.

Application Details

WB:1:1000~1:5000|ICC/IF:1:50~1:200|IP:1:50

Images



Western blot analysis of CCL4/MIP1 beta expression in (1) THP-1 cell lysate; (2) THP-1 cell treated with PMA+LPS+Brefeldin A.

Product Description

Monokine with inflammatory and chemokinetic properties. Binds to CCR5. One of the major HIV-suppressive factors produced by CD8⁺ T-cells. Recombinant MIP-1-beta induces a dose-dependent inhibition of different strains of HIV-1, HIV-2, and simian immunodeficiency virus (SIV).

Note: This product is for in vitro research use only