

BCAR1 Rabbit mAb

Catalog No: #56670

Package Size: #56670-1 50ul #56670-2 100ul

Orders: order@signalwayantibody.com

Support: tech@signalwayantibody.com

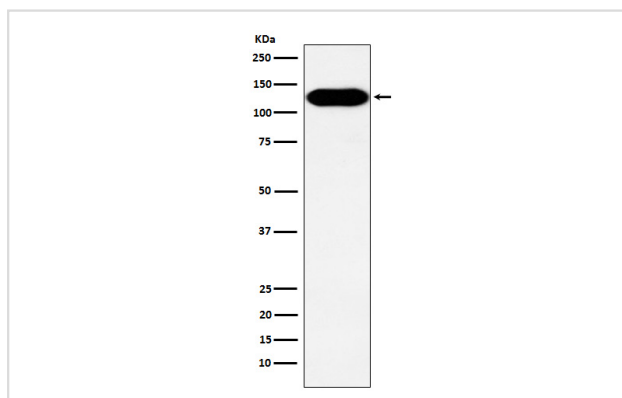
Description

Product Name	BCAR1 Rabbit mAb
Host Species	Rabbit
Clonality	Monoclonal
Isotype	Rabbit IgG
Purification	Affinity-chromatography
Applications	WB
Species Reactivity	Human Mouse Rat
Specificity	BCAR1 Antibody detects endogenous levels of total BCAR1
Immunogen Description	A synthesized peptide derived from human BCAR1
Other Names	BCAR 1; CAS; CAS1; Cass1; CRKAS; p130cas;
Accession No.	Uniprot:P56945
Uniprot	P56945
Calculated MW	130kDa
Formulation	Rabbit IgG in phosphate buffered saline , pH 7.4, 150mM NaCl, 0.02% sodium azide and 50% glycerol.
Storage	Store at +4Λ C short term. Store at -20Λ C long term. Avoid freeze / thaw cycle.

Application Details

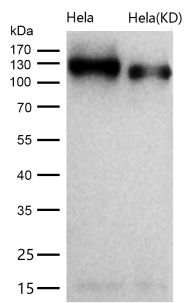
WB: 1:500~1:2000

Images



Western blot analysis of BCAR1 expression in A431 cell lysate.

All lanes use the Antibody at 1:1K dilution for 1 hour at room temperature.



Product Description

Docking protein which plays a central coordinating role for tyrosine kinase-based signaling related to cell adhesion. Implicated in induction of cell migration. Overexpression confers antiestrogen resistance on breast cancer cells.

Note: This product is for in vitro research use only