

Triosephosphate isomerase Rabbit mAb

Catalog No: #56674

Package Size: #56674-1 50ul #56674-2 100ul

Orders: order@signalwayantibody.comSupport: tech@signalwayantibody.com

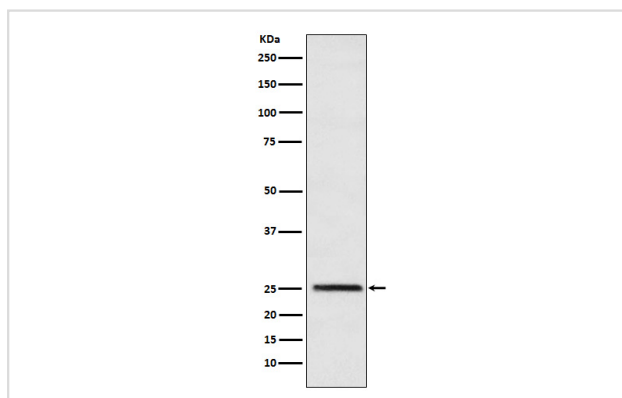
Description

Product Name	Triosephosphate isomerase Rabbit mAb
Host Species	Rabbit
Clonality	Monoclonal
Isotype	Rabbit IgG
Purification	Affinity-chromatography
Applications	WB FC
Species Reactivity	Human Mouse Rat
Specificity	Triosephosphate isomerase Antibody detects endogenous levels of total Triosephosphate isomerase
Immunogen Description	A synthesized peptide derived from human Triosephosphate isomerase
Other Names	HEL-S-49; TIM; TPI1; TPID;
Accession No.	Uniprot:P60174
Uniprot	P60174
Calculated MW	25kDa
Formulation	Rabbit IgG in phosphate buffered saline , pH 7.4, 150mM NaCl, 0.02% sodium azide and 50% glycerol.
Storage	Store at +4Λ C short term. Store at -20Λ C long term. Avoid freeze / thaw cycle.

Application Details

WB:1:500~1:2000FC:1:50

Images



Western blot analysis of Triosephosphate isomerase expression in HeLa cell lysate.

Product Description

Triosephosphate isomerase (TIM) catalyses the reversible interconversion of G3P and DHAP. Only G3P can be used in glycolysis, therefore TIM is essential for energy production, allowing two molecules of G3P to be produced for every glucose molecule, thereby doubling the energy yield.

Note: This product is for in vitro research use only