

LIMP2 Rabbit mAb

Catalog No: #56675

Package Size: #56675-1 50ul #56675-2 100ul

Orders: order@signalwayantibody.com

Support: tech@signalwayantibody.com

Description

Product Name	LIMP2 Rabbit mAb
Host Species	Rabbit
Clonality	Monoclonal
Isotype	Rabbit IgG
Purification	Affinity-chromatography
Applications	WB IHC IP FC
Species Reactivity	Human Mouse Rat
Specificity	LIMP2 Antibody detects endogenous levels of total LIMP2
Immunogen Description	A synthesized peptide derived from human LIMP2
Other Names	AMRF; CD36; CD36L2; EPM4; HLGP85; LGP85; LIMP2; LIMP2; Scarb2; SRBII;
Accession No.	Uniprot:Q14108
Uniprot	Q14108
Calculated MW	77kDa
Formulation	Rabbit IgG in phosphate buffered saline , pH 7.4, 150mM NaCl, 0.02% sodium azide and 50% glycerol.
Storage	Store at +4°C short term. Store at -20°C long term. Avoid freeze / thaw cycle.

Application Details

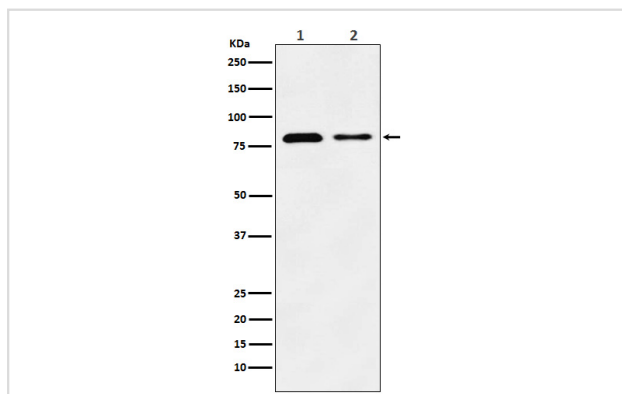
WB: 1:500~1:2000

IHC: 1:50~1:200

IP: 1:50

FC: 1:50

Images



Western blot analysis of LIMP2 expression in (1) HeLa cell lysate; (2) Mouse liver lysate.

Product Description

Acts as a lysosomal receptor for glucosylceramidase (GBA) targeting.

Note: This product is for in vitro research use only