

MAGOH Rabbit mAb

Catalog No: #56676

Package Size: #56676-1 50ul #56676-2 100ul

Orders: order@signalwayantibody.com

Support: tech@signalwayantibody.com

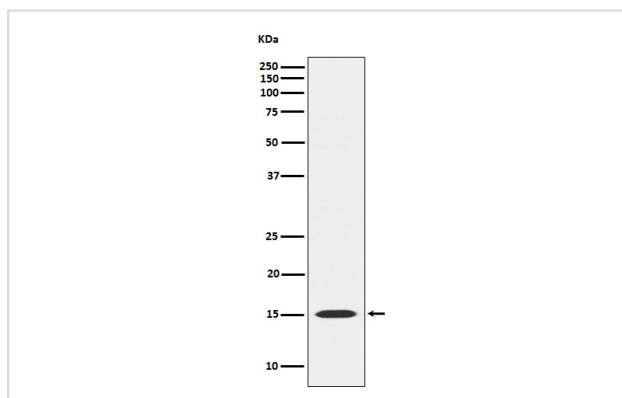
Description

Product Name	MAGOH Rabbit mAb
Host Species	Rabbit
Clonality	Monoclonal
Isotype	Rabbit IgG
Purification	Affinity-chromatography
Applications	WB IHC ICC/IF
Species Reactivity	Human Mouse Rat
Specificity	MAGOH Antibody detects endogenous levels of total MAGOH
Immunogen Description	A synthesized peptide derived from human MAGOH
Other Names	magoh; MAGOHA; Protein mago nashi homolog;
Accession No.	Uniprot:P61326
Uniprot	P61326
Calculated MW	17kDa
Formulation	Rabbit IgG in phosphate buffered saline , pH 7.4, 150mM NaCl, 0.02% sodium azide and 50% glycerol.
Storage	Store at +4 Λ C short term. Store at -20 Λ C long term. Avoid freeze / thaw cycle.

Application Details

WB:1:500~1:2000IHC:1:50~1:200ICC/IF:1:50~1:200

Images



Western blot analysis of MAGOH expression in HeLa cell lysate.

Product Description

Component of a splicing-dependent multiprotein exon junction complex (EJC) deposited at splice junction on mRNAs. The EJC is a dynamic structure consisting of a few core proteins and several more peripheral nuclear and cytoplasmic associated factors that join the complex only transiently either during EJC assembly or during subsequent mRNA metabolism.

Note: This product is for in vitro research use only