

## BACH1/BRIP1 Rabbit mAb

Catalog No: #56678

Package Size: #56678-1 50ul #56678-2 100ul

Orders: order@signalwayantibody.com

Support: tech@signalwayantibody.com

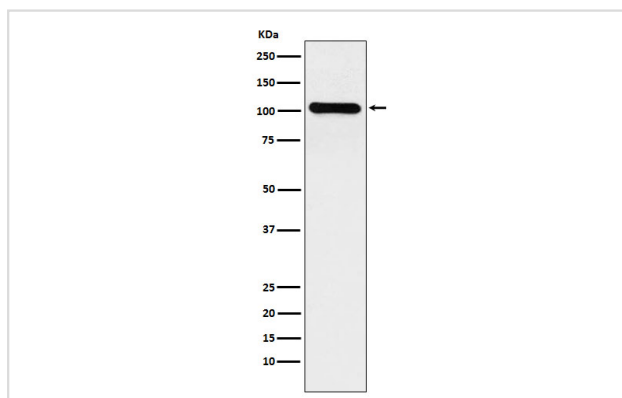
## Description

Product Name	BACH1/BRIP1 Rabbit mAb
Host Species	Rabbit
Clonality	Monoclonal
Isotype	Rabbit IgG
Purification	Affinity-chromatography
Applications	WB
Species Reactivity	Human
Specificity	BACH1/BRIP1 Antibody detects endogenous levels of total BACH1/BRIP1
Immunogen Description	A synthesized peptide derived from human BACH1/BRIP1
Other Names	BACH 1; BRIP 1; BRIP1; FANCI;
Accession No.	Uniprot:Q9BX63
Uniprot	Q9BX63
Calculated MW	105kDa
Formulation	Rabbit IgG in phosphate buffered saline , pH 7.4, 150mM NaCl, 0.02% sodium azide and 50% glycerol.
Storage	Store at +4 $\Lambda$ C short term. Store at -20 $\Lambda$ C long term. Avoid freeze / thaw cycle.

## Application Details

WB: 1:500~1:2000

## Images



Western blot analysis of BACH1/BRIP1 expression in HeLa cell lysate.

## Product Description

DNA-dependent ATPase and 5' to 3' DNA helicase required for the maintenance of chromosomal stability. Acts late in the Fanconi anemia pathway, after FANCD2 ubiquitination. Involved in the repair of DNA double-strand breaks by homologous recombination in a manner that depends on its association with BRCA1.

---

Note: This product is for in vitro research use only